

OEJN/JED

KING ABDULAZIZ INTL

23 APR 10

1

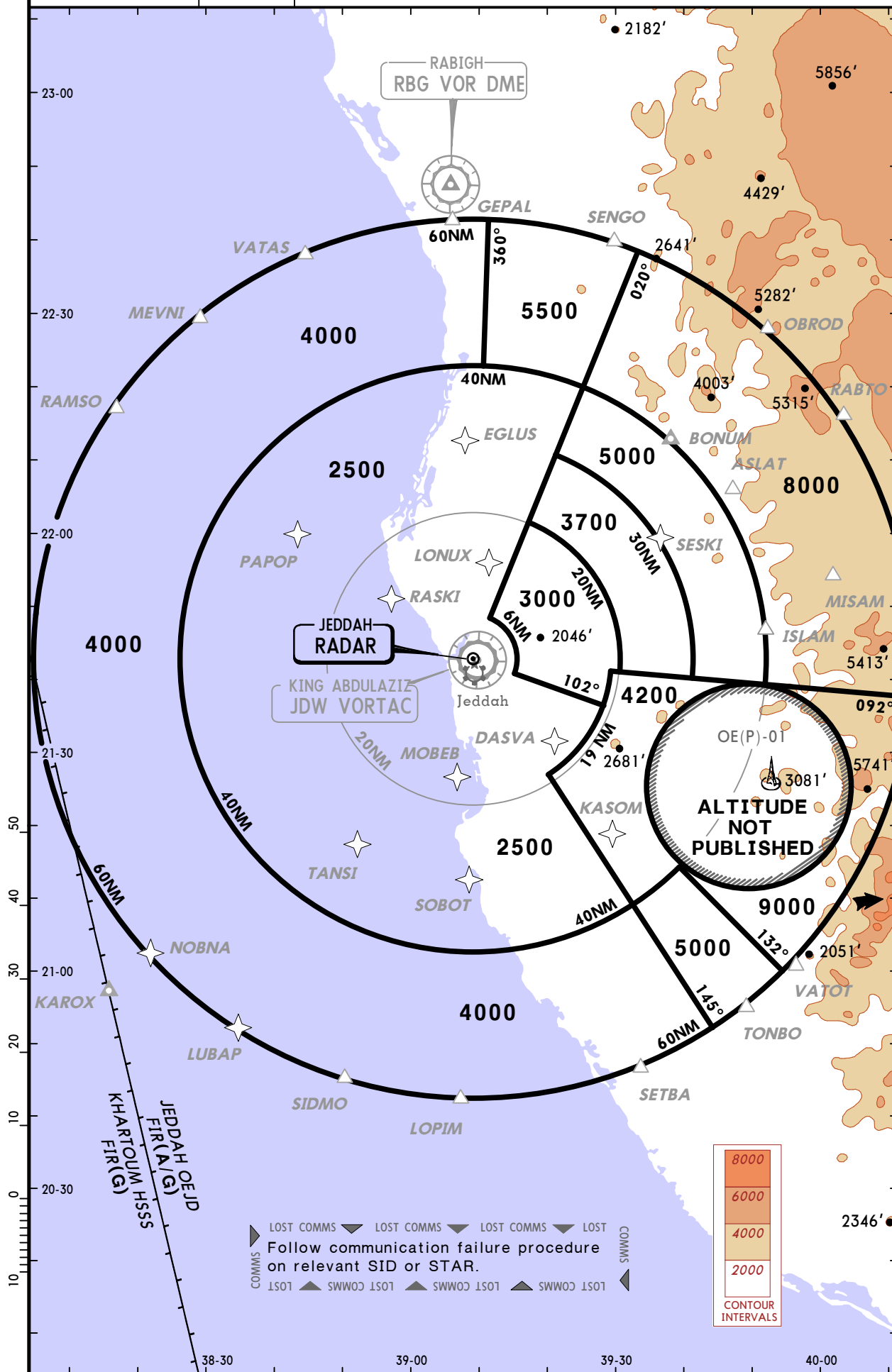
JEDDAH, SAUDI ARABIA

RADAR MINIMUM ALTITUDES

JEDDAH Approach (R)
119.1 124.0

Apt Elev
48'

Alt Set: hPa Trans level: FL150 Trans alt: 13000'
This chart may only be used for cross-checking of altitudes
assigned while under radar control.



OEJN/JED
KING ABDULAZIZ INTL

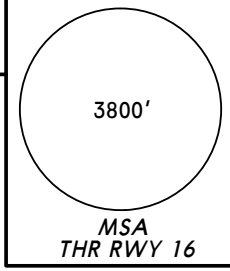
25 JUN 10 2

JEDDAH, SAUDI ARABIA

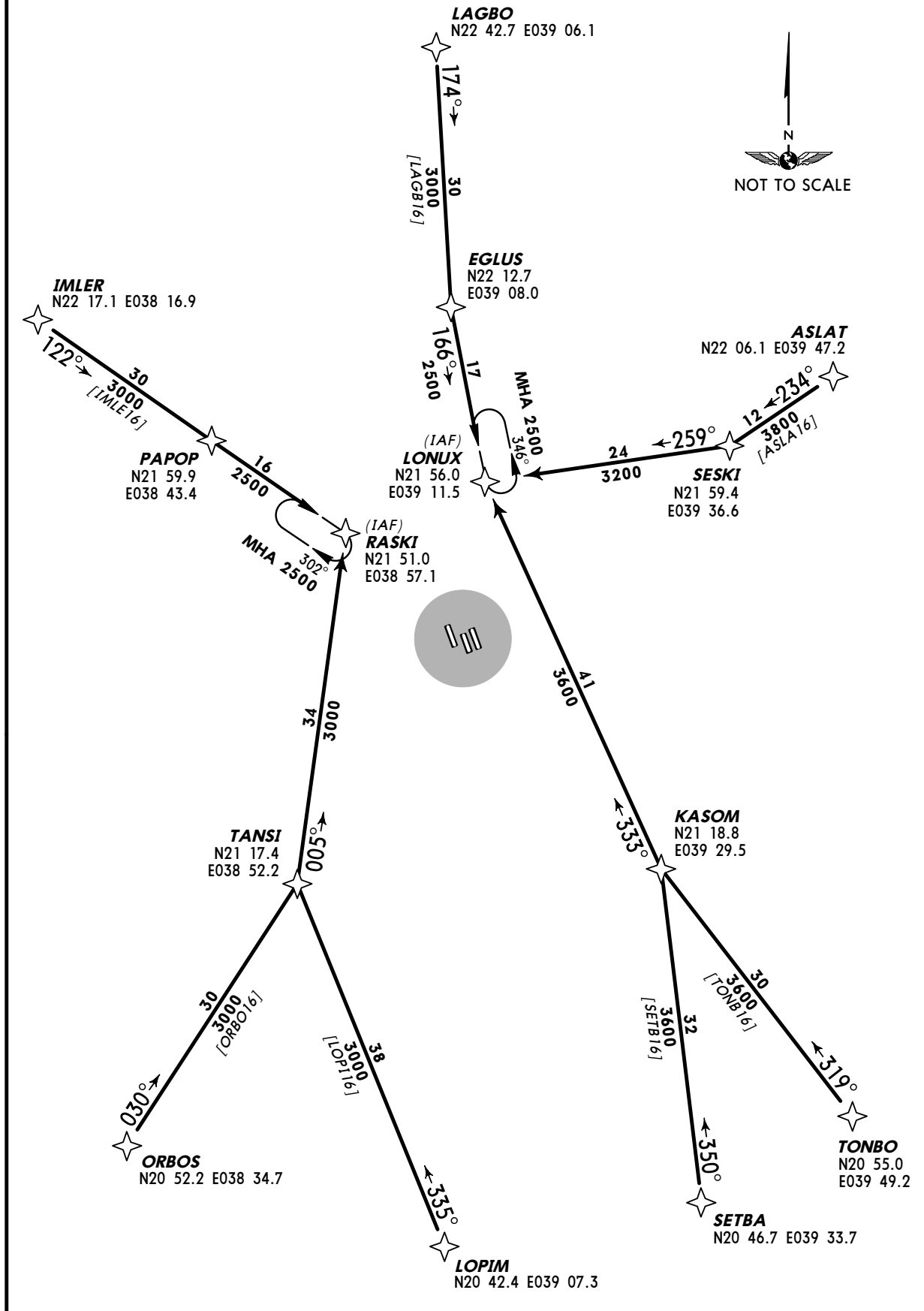
RNAV ARRIVAL

Apt Elev
48'

Alt Set: hPa
Trans level: FL150 Trans alt: 13000'



RWYS 16L/C/R RNAV ARRIVALS
BY ATC



LAGBO
N22 42.7 E039 06.1

174°

3000
30
[LAGB16]

EGLUS
N22 12.7 E039 08.0

166°
17
2500

ASLAT
N22 06.1 E039 47.2

234°
12
3800
[ASLA16]

SESKI
N21 59.4 E039 36.6

259°
24
3200

(IAF)
LONUX
N21 56.0 E039 11.5

MHA 2500
346°

(IAF)
RASKI
N21 51.0 E038 57.1

302°
MHA 2500

IMLER
N22 17.1 E038 16.9

122°
30
3000
[IMLE16]

PAPOP
N21 59.9 E038 43.4

16
2500

TANSI
N21 17.4 E038 52.2

005°
34
3000

ORBOS
N20 52.2 E038 34.7

030°
30
3000
[ORBO16]

LOPIM
N20 42.4 E039 07.3

335°
38
3000
[LOPI16]

KASOM
N21 18.8 E039 29.5

333°
41
3600

TONBO
N20 55.0 E039 49.2

319°
30
3600
[TONB16]

SETBA
N20 46.7 E039 33.7

350°
32
3600
[SETB16]

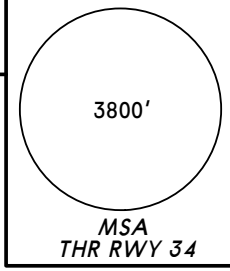
OEJN/JED
KING ABDULAZIZ INTL

3

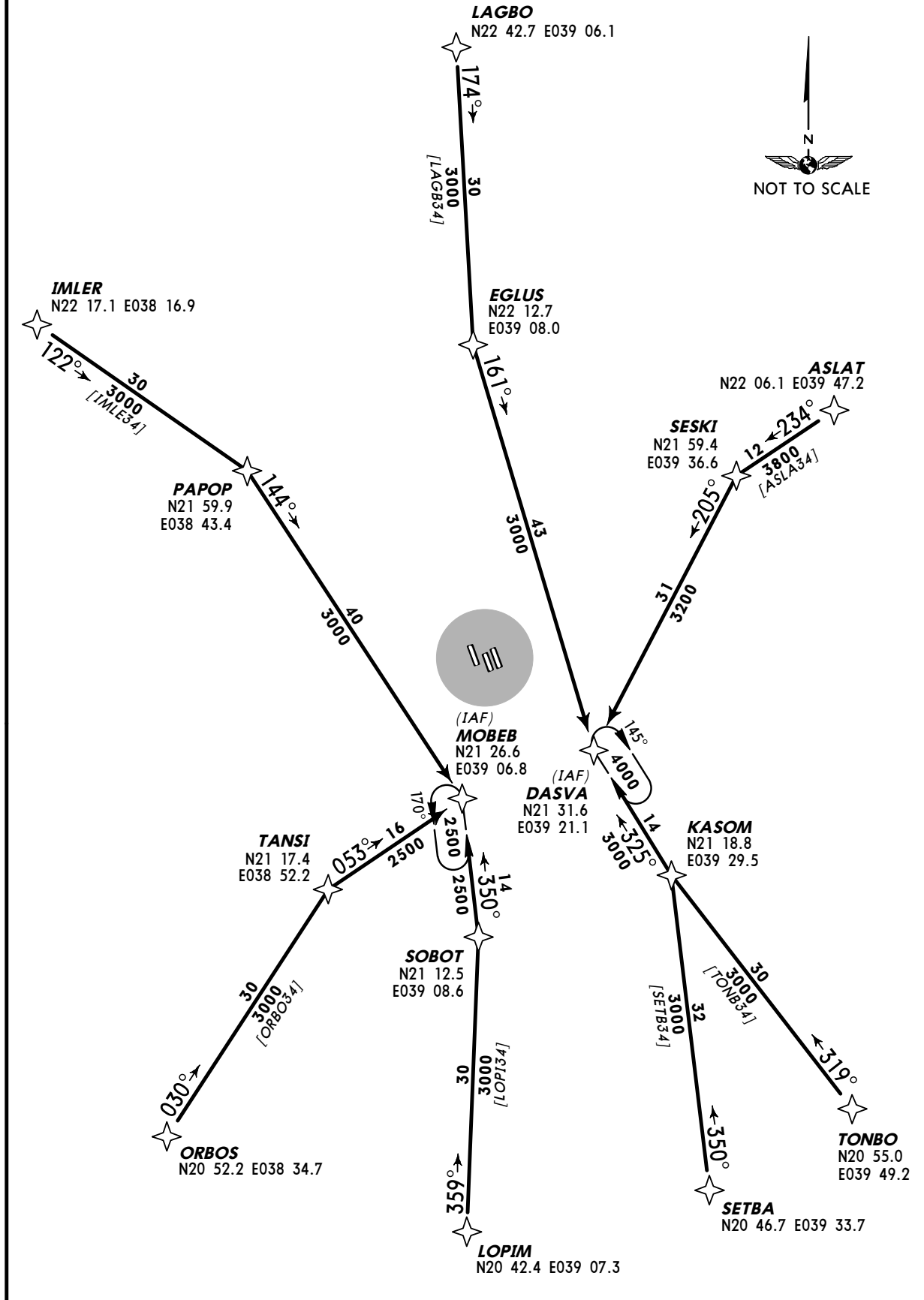
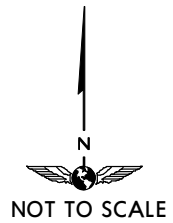
JEDDAH, SAUDI ARABIA

RNAV ARRIVAL

Apt Elev 48'
Alt Set: hPa
Trans level: FL150 Trans alt: 13000'



RWYS 34L/C/R RNAV ARRIVALS
BY ATC



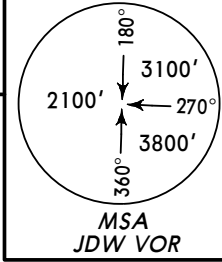
OEJN/JED
KING ABDULAZIZ INTL

5 MAR 10 4

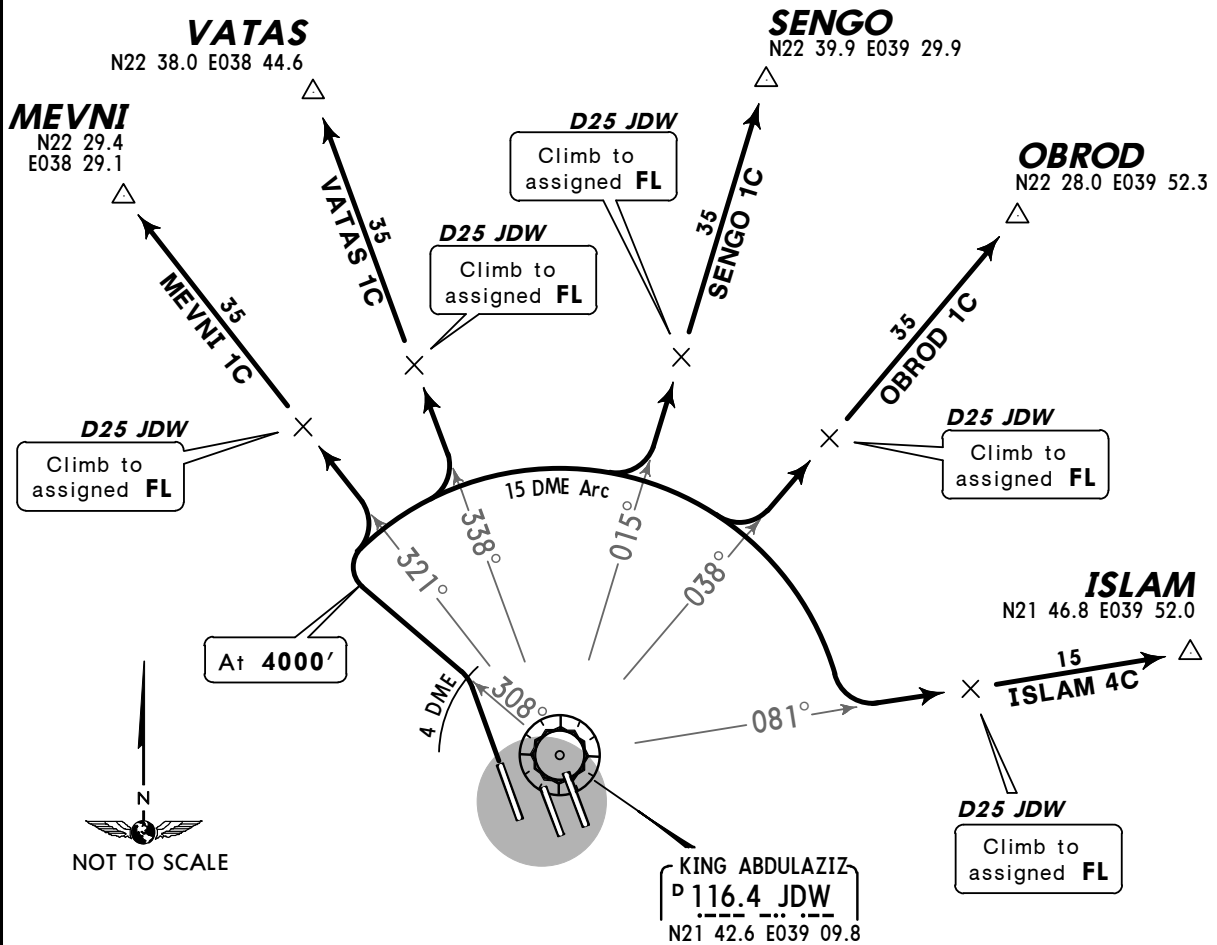
JEDDAH, SAUDI ARABIA

SID

Apt Elev 48' Trans level: FL150 Trans alt: 13000'
Contact JEDDAH Approach immediately after take-off.



ISLAM 4C [ISLA4C]
MEVNI 1C [MEVN1C]
OBROD 1C [OBRO1C]
SENGO 1C [SENG1C]
VATAS 1C [VATA1C]
RWY 34L DEPARTURES
TO NORTHWEST, NORTHEAST & EAST



These SIDs require a minimum climb gradient of 320' per NM.

Gnd speed-KT	75	100	150	200	250	300
320' per NM	400	533	800	1067	1333	1600

If unable to comply with SID advise ATC prior to take-off.

SID	ROUTING	
ISLAM 4C	Climb on runway heading to JDW 4 DME, intercept JDW R-308 to RIGHT, along JDW 15 DME arc, intercept JDW R-081 to ISLAM.	4000' , turn
MEVNI 1C	Climb on runway heading to JDW 4 DME, intercept JDW R-308 to RIGHT, along JDW 15 DME arc, intercept JDW R-321 to MEVNI.	4000' , turn
OBROD 1C	Climb on runway heading to JDW 4 DME, intercept JDW R-308 to RIGHT, along JDW 15 DME arc, intercept JDW R-038 to OBROD.	4000' , turn
SENGO 1C	Climb on runway heading to JDW 4 DME, intercept JDW R-308 to RIGHT, along JDW 15 DME arc, intercept JDW R-015 to SENGO.	4000' , turn
VATAS 1C	Climb on runway heading to JDW 4 DME, intercept JDW R-308 to RIGHT, along JDW 15 DME arc, intercept JDW R-338 to VATAS.	4000' , turn

OEJN/JED
KING ABDULAZIZ INTL

5 MAR 10

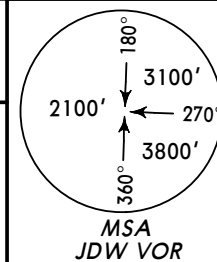
5

JEDDAH, SAUDI ARABIA

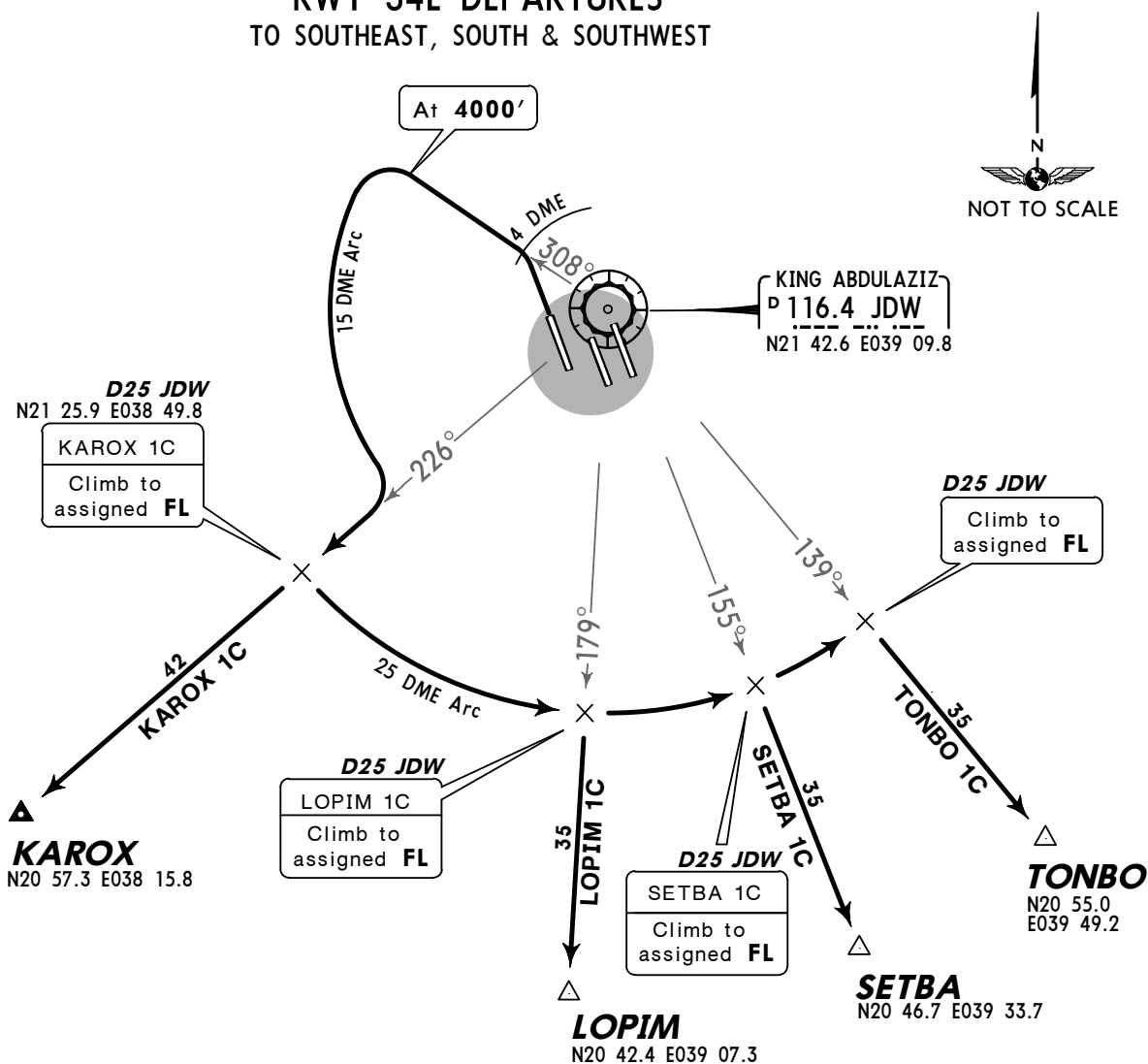
SID

Apt Elev
48'

Trans level: FL150 Trans alt: 13000'
Contact JEDDAH Approach immediately after take-off.



**KAROX 1C [KARO1C]
LOPIM 1C [LOPI1C]
SETBA 1C [SETB1C]
TONBO 1C [TONB1C]
RWY 34L DEPARTURES
TO SOUTHEAST, SOUTH & SOUTHWEST**



These SIDs require a minimum climb gradient of 320' per NM.

Gnd speed-KT	75	100	150	200	250	300
320' per NM	400	533	800	1067	1333	1600

If unable to comply with SID advise ATC prior to take-off.

SID	ROUTING
KAROX 1C	Climb on runway heading to JDW 4 DME, intercept JDW R-308 to 4000', turn LEFT, along JDW 15 DME arc, intercept JDW R-226 to KAROX.
LOPIM 1C	Climb on runway heading to JDW 4 DME, intercept JDW R-308 to 4000', turn LEFT, along JDW 15 DME arc, intercept JDW R-226, turn LEFT, along JDW 25 DME arc, intercept JDW R-179 to LOPIM.
SETBA 1C	Climb on runway heading to JDW 4 DME, intercept JDW R-308 to 4000', turn LEFT, along JDW 15 DME arc, intercept JDW R-226, turn LEFT, along JDW 25 DME arc, intercept JDW R-155 to SETBA.
TONBO 1C	Climb on runway heading to JDW 4 DME, intercept JDW R-308 to 4000', turn LEFT, along JDW 15 DME arc, intercept JDW R-226, turn LEFT, along JDW 25 DME arc, intercept JDW R-139 to TONBO.

OEJN/JED
KING ABDULAZIZ INTL

5 MAR 10

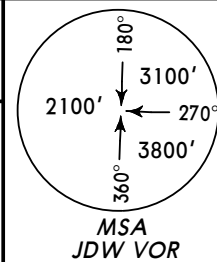
6

JEDDAH, SAUDI ARABIA

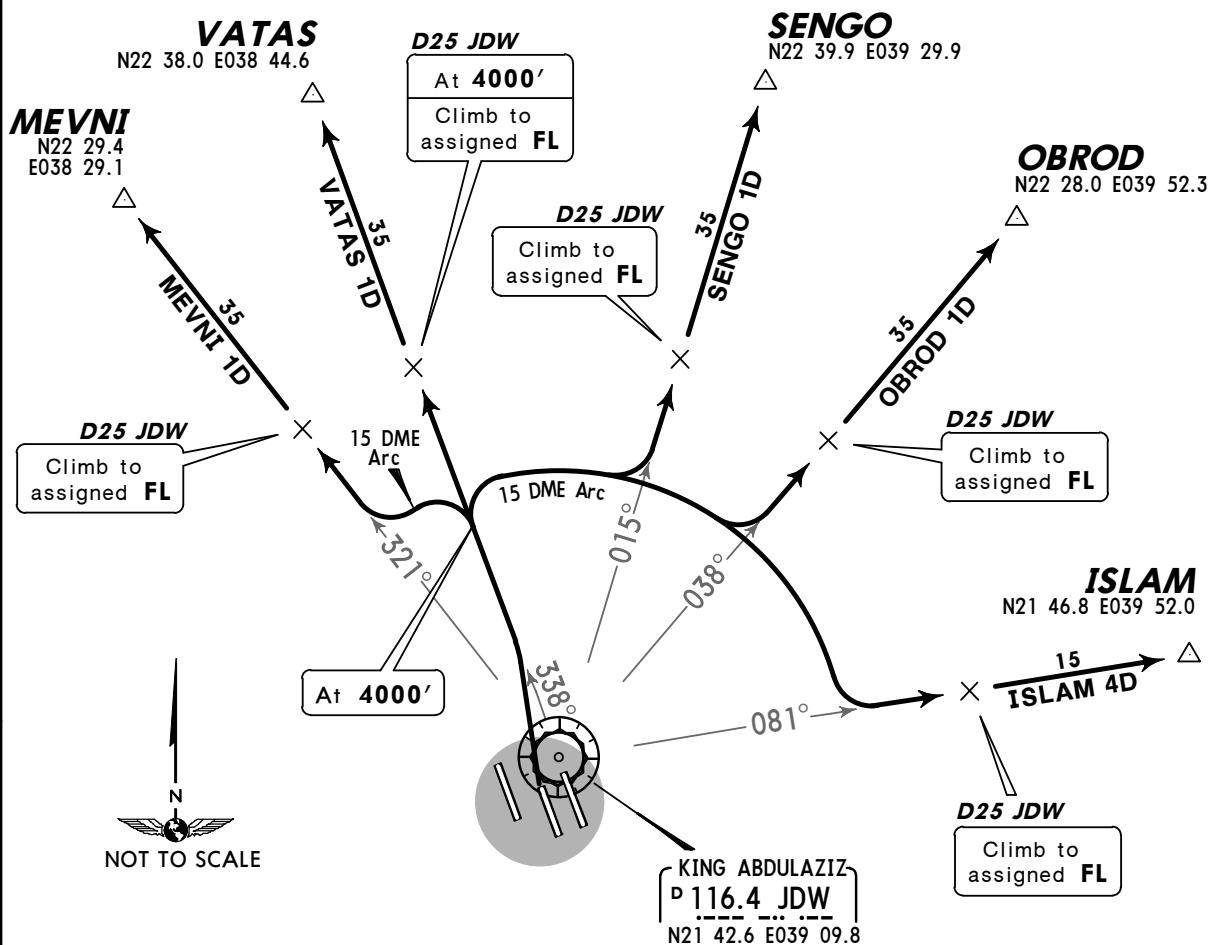
SID

Apt Elev
48'

Trans level: FL150 Trans alt: 13000'
Contact JEDDAH Approach immediately after take-off.



ISLAM 4D [ISLA4D]
MEVNI 1D [MEVN1D]
OBROD 1D [OBRO1D]
SENGO 1D [SENG1D]
VATAS 1D [VATA1D]
RWY 34C DEPARTURES
TO NORTHWEST, NORTHEAST & EAST



These SIDs require a minimum climb gradient of 320' per NM.

Gnd speed-KT	75	100	150	200	250	300
320' per NM	400	533	800	1067	1333	1600

If unable to comply with SID advise ATC prior to take-off.

SID	ROUTING
ISLAM 4D	Climb on JDW R-338 to 4000', turn RIGHT, along JDW 15 DME arc, intercept JDW R-081 to ISLAM.
MEVNI 1D	Climb on JDW R-338 to 4000', turn LEFT, along JDW 15 DME arc, intercept JDW R-321 to MEVNI.
OBROD 1D	Climb on JDW R-338 to 4000', turn RIGHT, along JDW 15 DME arc, intercept JDW R-038 to OBROD.
SENGO 1D	Climb on JDW R-338 to 4000', turn RIGHT, along JDW 15 DME arc, intercept JDW R-015 to SENG.
VATAS 1D	Climb on JDW R-338 to 4000', maintain 4000' to D25 JDW, then to VATAS.

OEJN/JED
KING ABDULAZIZ INTL

5 MAR 10

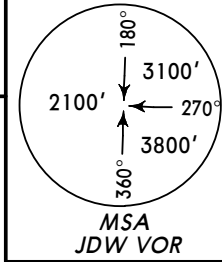
7

JEDDAH, SAUDI ARABIA

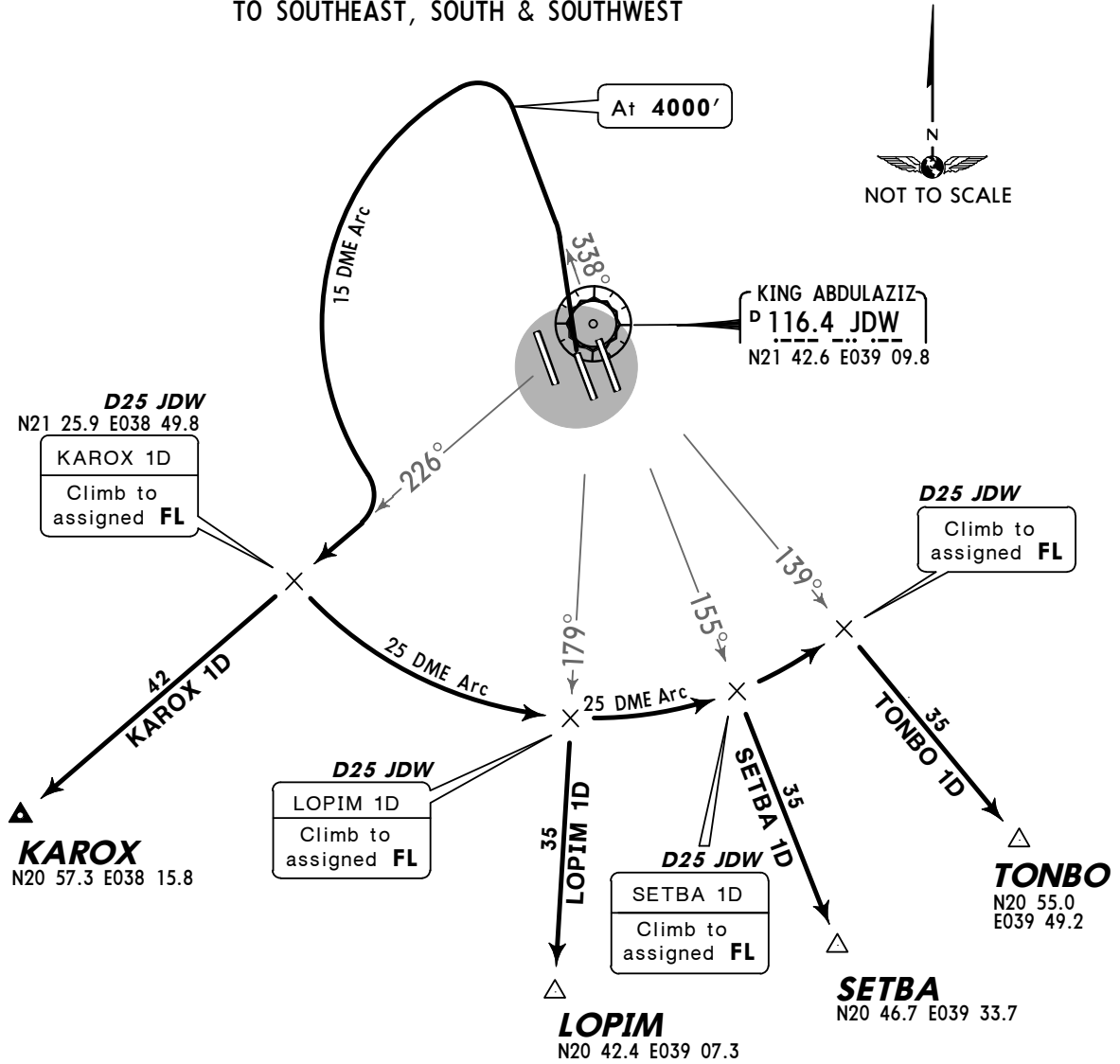
SID

Apt Elev
48'

Trans level: FL150 Trans alt: 13000'
Contact JEDDAH Approach immediately after take-off.



KAROX 1D [KARO1D]
LOPIM 1D [LOPI1D]
SETBA 1D [SETB1D]
TONBO 1D [TONB1D]
RWY 34C DEPARTURES
TO SOUTHEAST, SOUTH & SOUTHWEST



These SIDs require a minimum climb gradient of 320' per NM.

Gnd speed-KT	75	100	150	200	250	300
320' per NM	400	533	800	1067	1333	1600

If unable to comply with SID advise ATC prior to take-off.

SID	ROUTING
KAROX 1D	Climb on JDW R-338 to 4000' , turn LEFT, along JDW 15 DME arc, intercept JDW R-226 to KAROX.
LOPIM 1D	Climb on JDW R-338 to 4000' , turn LEFT, along JDW 15 DME arc, intercept JDW R-226, turn LEFT, along JDW 25 DME arc, intercept JDW R-179 to LOPIM.
SETBA 1D	Climb on JDW R-338 to 4000' , turn LEFT, along JDW 15 DME arc, intercept JDW R-226, turn LEFT, along JDW 25 DME arc, intercept JDW R-155 to SETBA.
TONBO 1D	Climb on JDW R-338 to 4000' , turn LEFT, along JDW 15 DME arc, intercept JDW R-226, turn LEFT, along JDW 25 DME arc, intercept JDW R-139 to TONBO.

OEJN/JED
KING ABDULAZIZ INTL

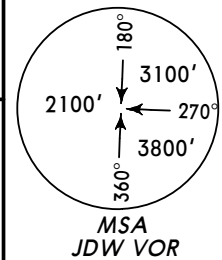
5 MAR 10 8

JEDDAH, SAUDI ARABIA

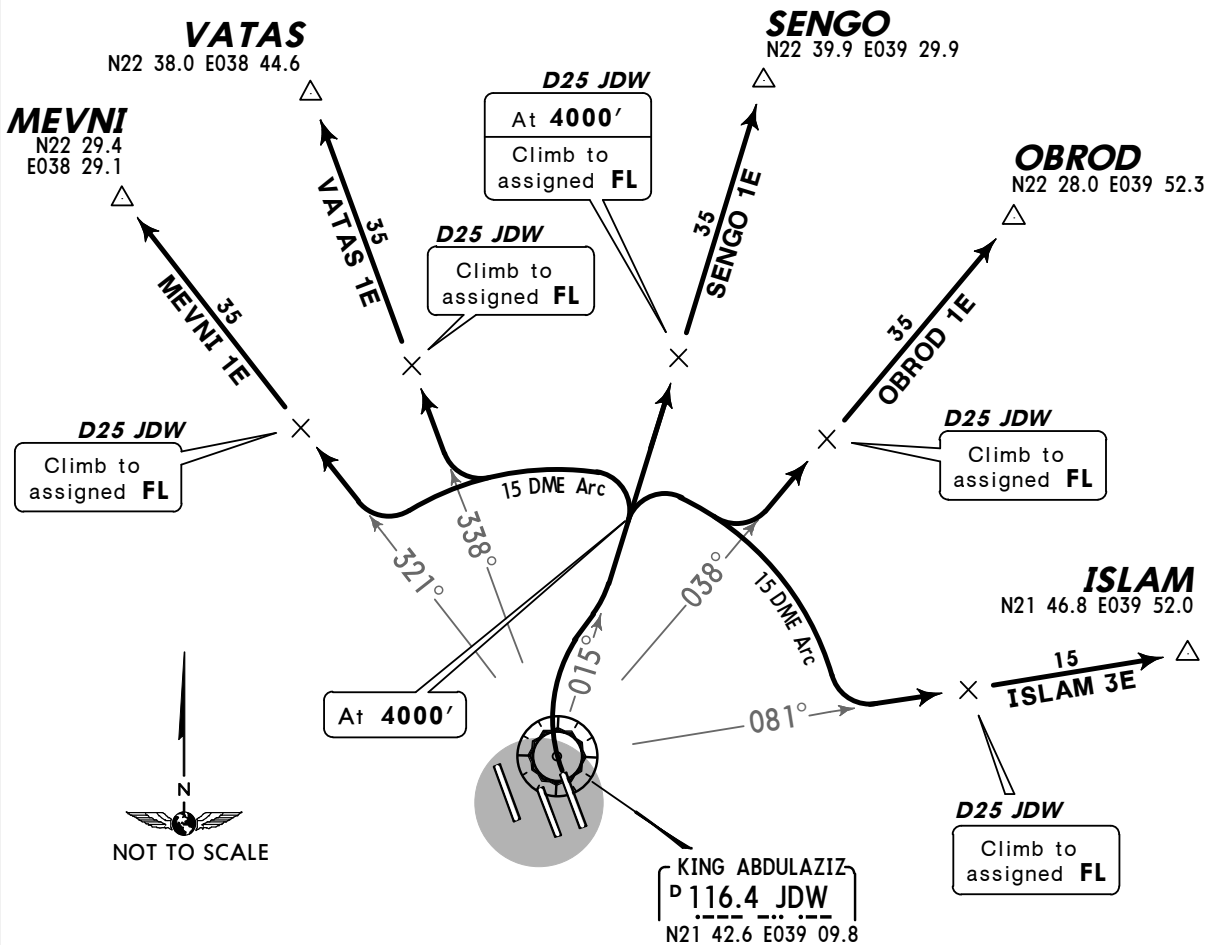
SID

Apt Elev
48'

Trans level: FL150 Trans alt: 13000'
Contact JEDDAH Approach immediately after take-off.



ISLAM 3E [ISLA3E]
MEVNI 1E [MEVNI1E]
OBROD 1E [OBRO1E]
SENGO 1E [SENG1E]
VATAS 1E [VATA1E]
RWY 34R DEPARTURES
TO NORTHWEST, NORTHEAST & EAST



These SIDs require a minimum climb gradient of 286' per NM.

Gnd speed-KT	75	100	150	200	250	300
286' per NM	357	477	715	953	1192	1430

If unable to comply with SID advise ATC prior to take-off.

SID	ROUTING
ISLAM 3E	Climb on JDW R-015 to 4000', turn RIGHT, along JDW 15 DME arc, intercept JDW R-081 to ISLAM.
MEVNI 1E	Climb on JDW R-015 to 4000', turn LEFT, along JDW 15 DME arc, intercept JDW R-321 to MEVNI.
OBROD 1E	Climb on JDW R-015 to 4000', turn RIGHT, along JDW 15 DME arc, intercept JDW R-038 to OBROD.
SENGO 1E	Climb on JDW R-015 to 4000', maintain 4000' to D25 JDW, then to SENGO.
VATAS 1E	Climb on JDW R-015 to 4000', turn LEFT, along JDW 15 DME arc, intercept JDW R-338 to VATAS.

OEJN/JED
KING ABDULAZIZ INTL

5 MAR 10

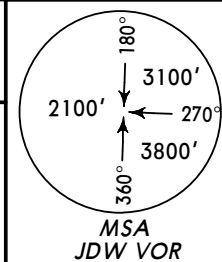
9

JEDDAH, SAUDI ARABIA

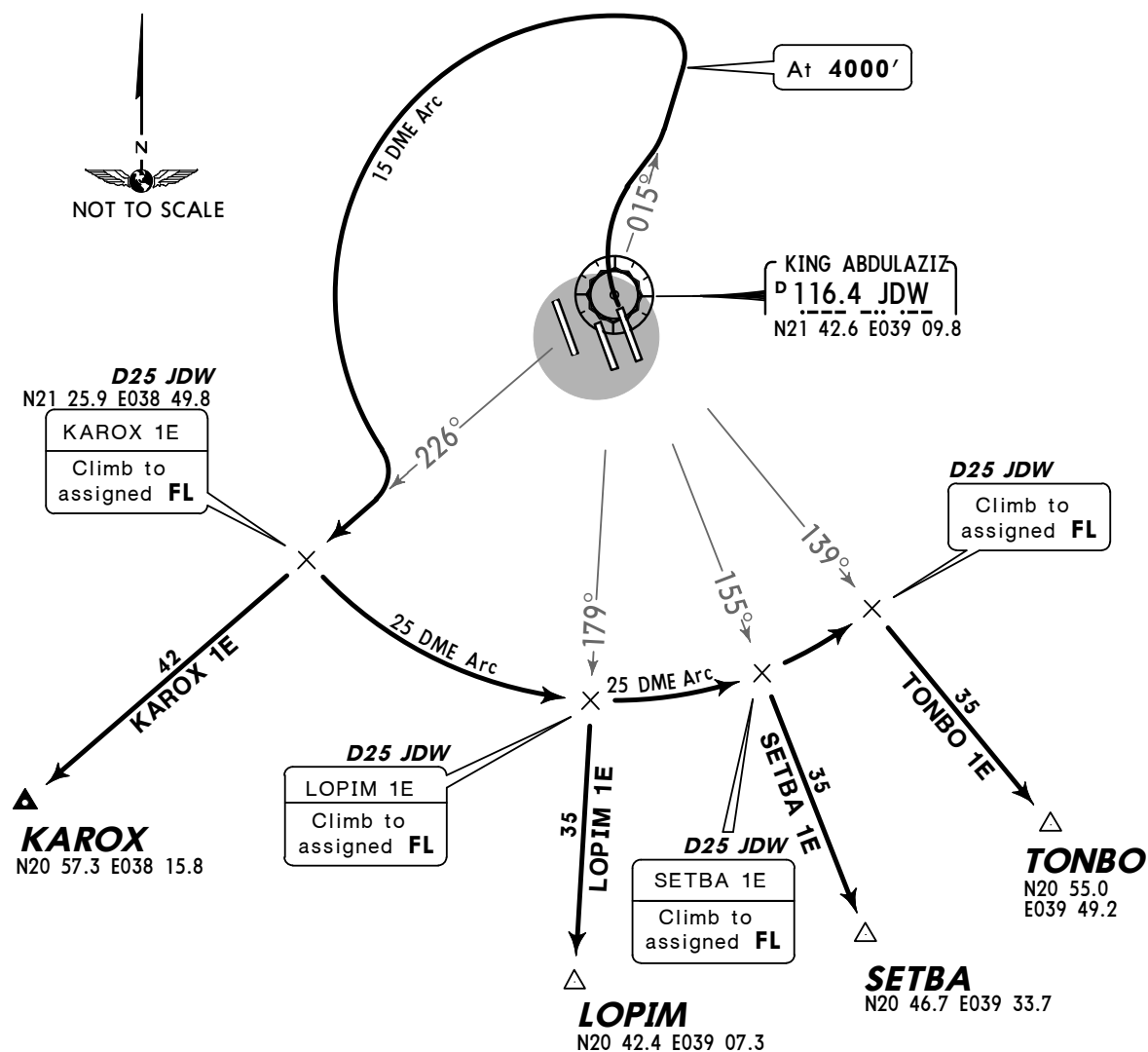
SID

Apt Elev
48'

Trans level: FL150 Trans alt: 13000'
Contact JEDDAH Approach immediately after take-off.



**KAROX 1E [KARO1E]
LOPIM 1E [LOPI1E]
SETBA 1E [SETB1E]
TONBO 1E [TONB1E]
RWY 34R DEPARTURES
TO SOUTHEAST, SOUTH & SOUTHWEST**



These SIDs require a minimum climb gradient of 286' per NM.

Gnd speed-KT	75	100	150	200	250	300
286' per NM	357	477	715	953	1192	1430

If unable to comply with SID advise ATC prior to take-off.

SID	ROUTING
KAROX 1E	Climb on JDW R-015 to 4000' , turn LEFT, along JDW 15 DME arc, intercept JDW R-226 to KAROX.
LOPIM 1E	Climb on JDW R-015 to 4000' , turn LEFT, along JDW 15 DME arc, intercept JDW R-226, turn LEFT, along JDW 25 DME arc, intercept JDW R-179 to LOPIM.
SETBA 1E	Climb on JDW R-015 to 4000' , turn LEFT, along JDW 15 DME arc, intercept JDW R-226, turn LEFT, along JDW 25 DME arc, intercept JDW R-155 to SETBA.
TONBO 1E	Climb on JDW R-015 to 4000' , turn LEFT, along JDW 15 DME arc, intercept JDW R-226, turn LEFT, along JDW 25 DME arc, intercept JDW R-139 to TONBO.

OEJN/JED
KING ABDULAZIZ INTL

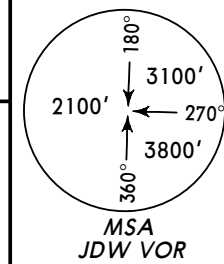
5 MAR 10 10

JEDDAH, SAUDI ARABIA

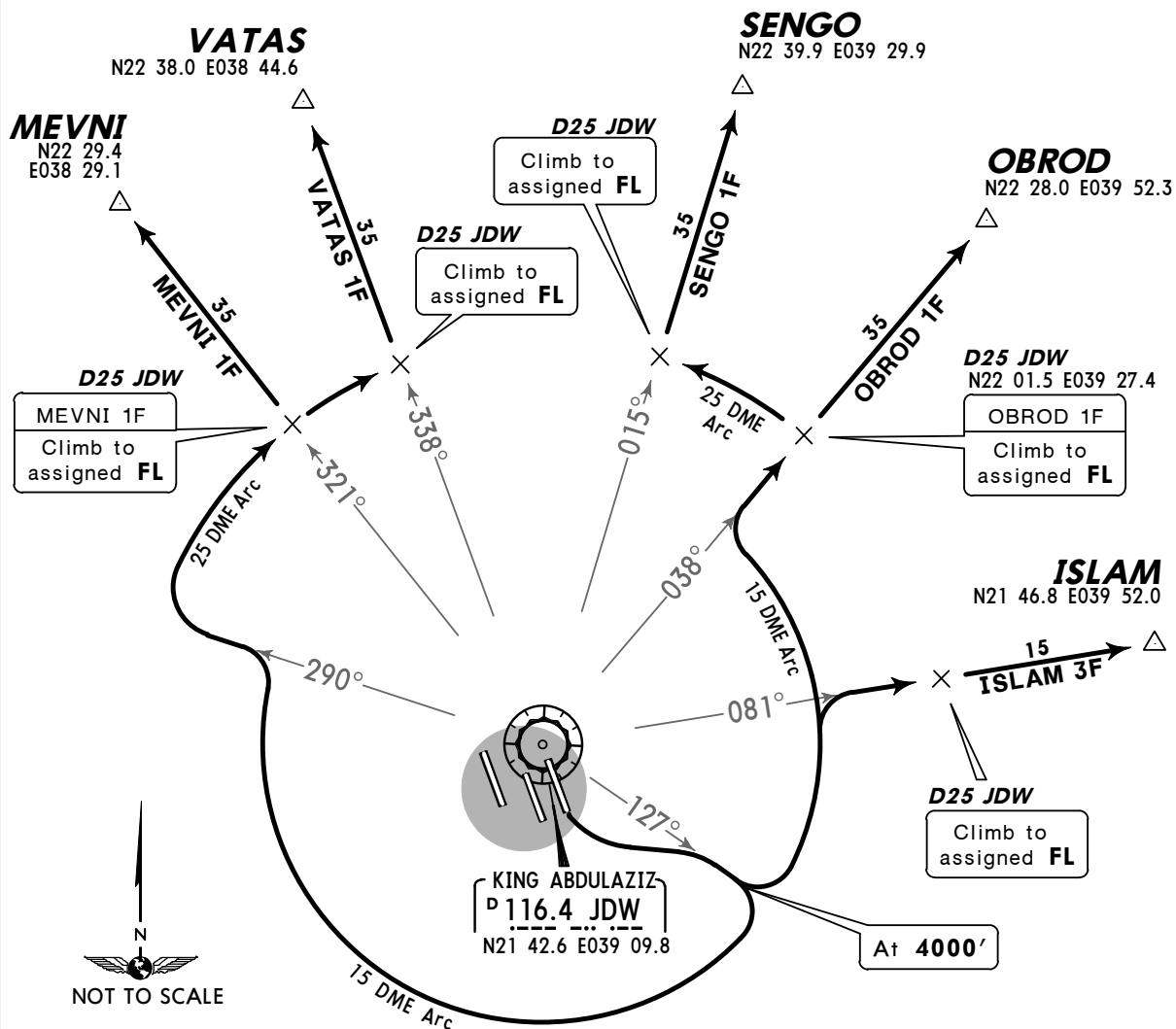
SID

Apt Elev
48'

Trans level: FL150 Trans alt: 13000'
Contact JEDDAH Approach immediately after take-off.



ISLAM 3F [ISLA3F]
MEVNI 1F [MEVN1F]
OBROD 1F [OBRO1F]
SENGO 1F [SENG1F]
VATAS 1F [VATA1F]
RWY 16L DEPARTURES
TO NORTHWEST, NORTHEAST & EAST



These SIDs require a minimum climb gradient of 286' per NM.

Gnd speed-KT	75	100	150	200	250	300
286' per NM	357	477	715	953	1192	1430

If unable to comply with SID advise ATC prior to take-off.

SID	ROUTING
ISLAM 3F	Climb on JDW R-127 to 4000' , turn LEFT, along JDW 15 DME arc, intercept JDW R-081 to ISLAM.
MEVNI 1F	Climb on JDW R-127 to 4000' , turn RIGHT, along JDW 15 DME arc, intercept JDW R-290, turn RIGHT, along JDW 25 DME arc, intercept JDW R-321 to MEVNI.
OBROD 1F	Climb on JDW R-127 to 4000' , turn LEFT, along JDW 15 DME arc, intercept JDW R-038 to OBROD.
SENGO 1F	Climb on JDW R-127 to 4000' , turn LEFT, along JDW 15 DME arc, intercept JDW R-038, turn LEFT, along JDW 25 DME arc, intercept JDW R-015 to SENG0.
VATAS 1F	Climb on JDW R-127 to 4000' , turn RIGHT, along JDW 15 DME arc, intercept JDW R-290, turn RIGHT, along JDW 25 DME arc, intercept JDW R-338 to VATAS.

OEJN/JED
KING ABDULAZIZ INTL

5 MAR 10

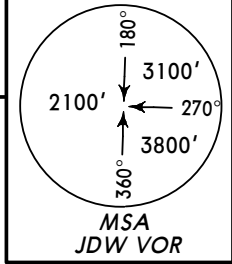
11

JEDDAH, SAUDI ARABIA

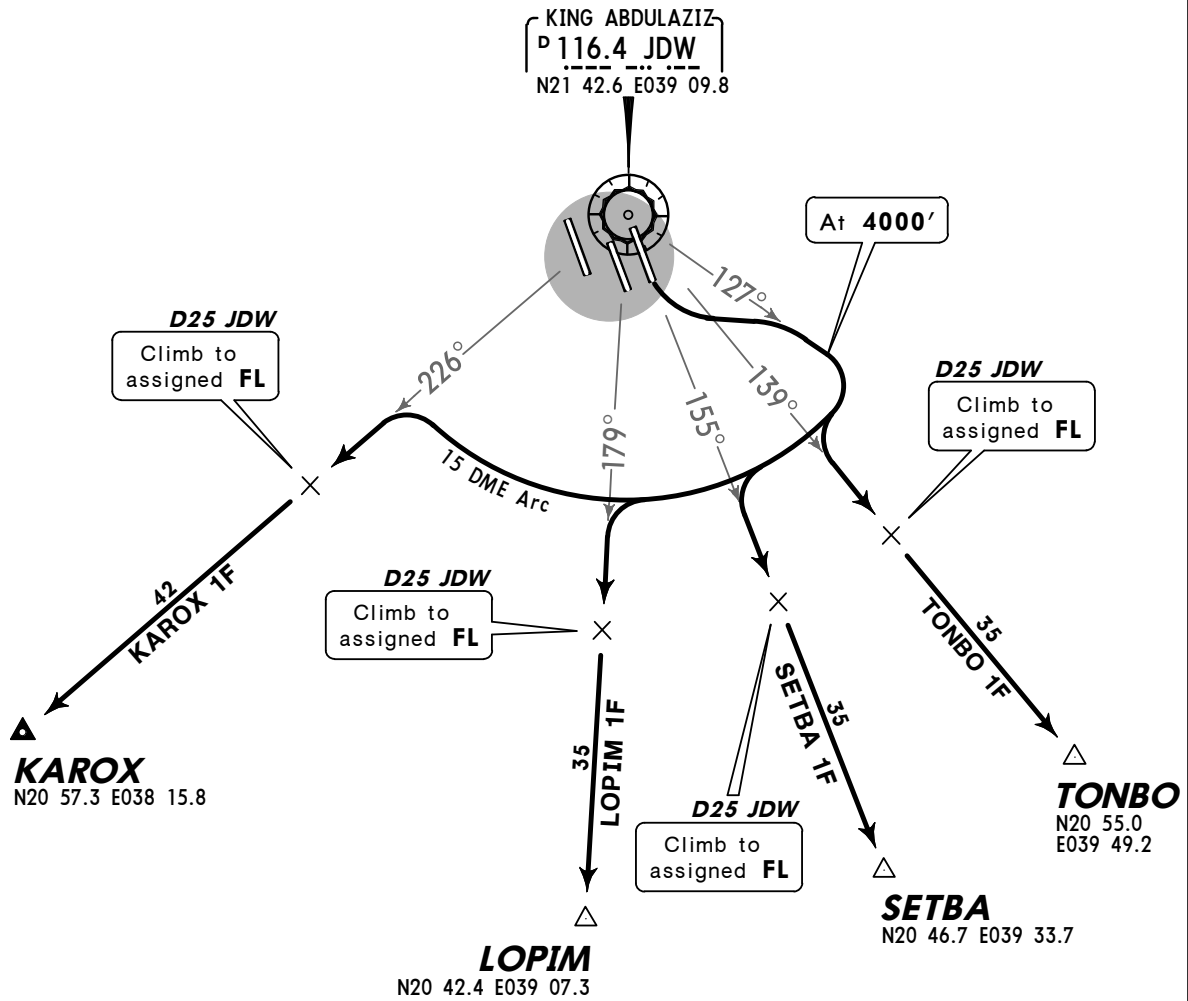
SID

Apt Elev
48'

Trans level: FL150 Trans alt: 13000'
Contact JEDDAH Approach immediately after take-off.



KAROX 1F [KARO1F]
LOPIM 1F [LOPI1F]
SETBA 1F [SETB1F]
TONBO 1F [TONB1F]
RWY 16L DEPARTURES
TO SOUTHEAST, SOUTH & SOUTHWEST



These SIDs require a minimum climb gradient of 286' per NM.

Gnd speed-KT	75	100	150	200	250	300
286' per NM	357	477	715	953	1192	1430

If unable to comply with SID advise ATC prior to take-off.



SID	ROUTING
KAROX 1F	Climb on JDW R-127 to 4000', turn RIGHT, along JDW 15 DME arc, intercept JDW R-226 to KAROX.
LOPIM 1F	Climb on JDW R-127 to 4000', turn RIGHT, along JDW 15 DME arc, intercept JDW R-179 to LOPIM.
SETBA 1F	Climb on JDW R-127 to 4000', turn RIGHT, along JDW 15 DME arc, intercept JDW R-155 to SETBA.
TONBO 1F	Climb on JDW R-127 to 4000', turn RIGHT, along JDW 15 DME arc, intercept JDW R-139 to TONBO.

OEJN/JED
KING ABDULAZIZ INTL

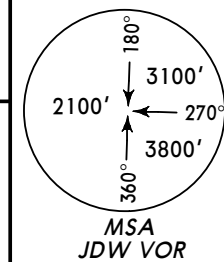
5 MAR 10 12

JEDDAH, SAUDI ARABIA

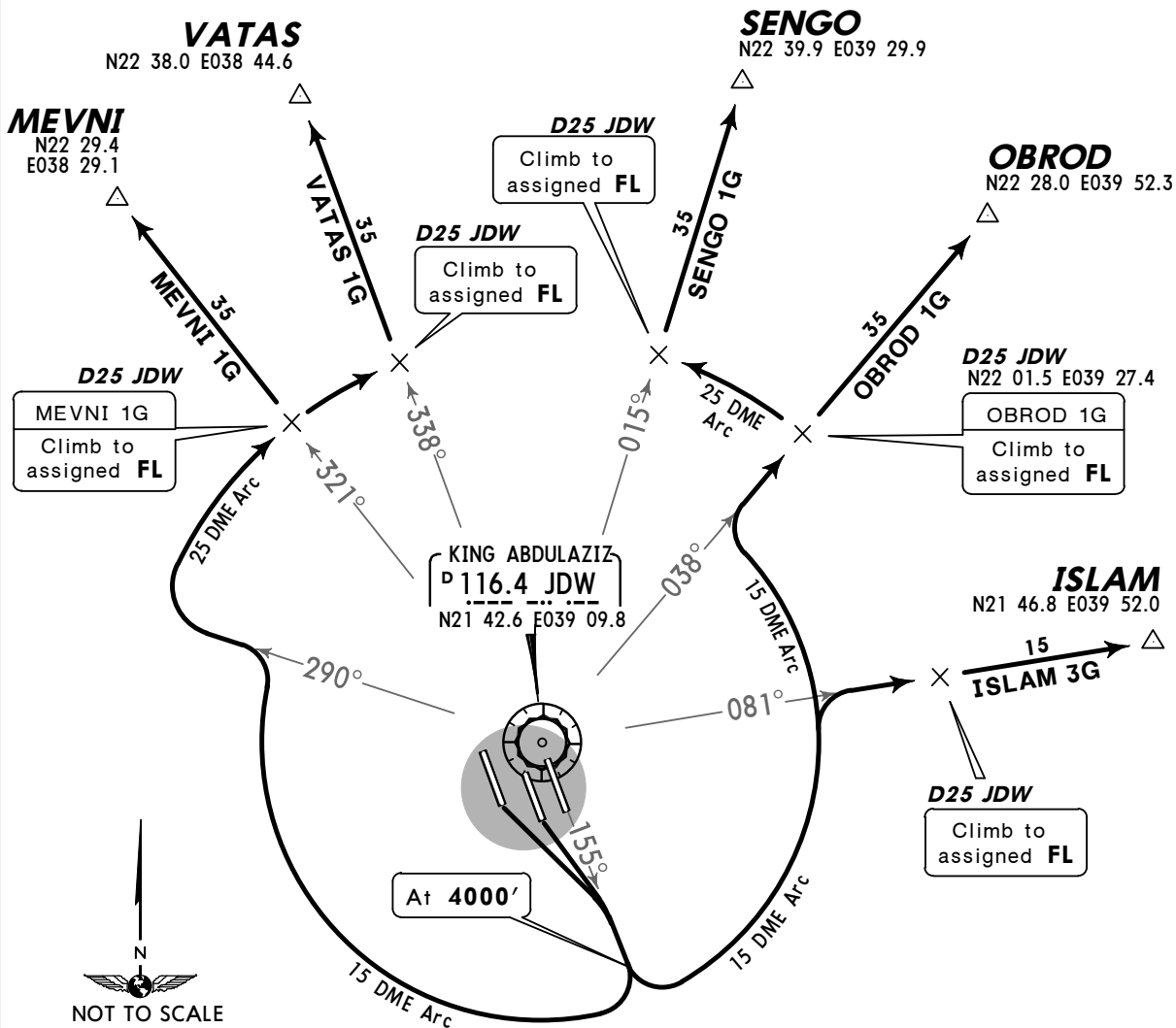
SID

Apt Elev
48'

Trans level: FL150 Trans alt: 13000'
Contact JEDDAH Approach immediately after take-off.



ISLAM 3G [ISLA3G]
MEVNI 1G [MEVN1G]
OBROD 1G [OBRO1G]
SENGO 1G [SENG1G]
VATAS 1G [VATA1G]
RWYS 16C/R DEPARTURES
TO NORTHWEST, NORTHEAST & EAST



These SIDs require a minimum climb gradient of 286' per NM.

Gnd speed-KT	75	100	150	200	250	300
286' per NM	357	477	715	953	1192	1430

If unable to comply with SID advise ATC prior to take-off.

SID	ROUTING
ISLAM 3G	Climb on JDW R-155 to 4000' , turn LEFT, along JDW 15 DME arc, intercept JDW R-081 to ISLAM.
MEVNI 1G	Climb on JDW R-155 to 4000' , turn RIGHT, along JDW 15 DME arc, intercept JDW R-290, turn RIGHT, along JDW 25 DME arc, intercept JDW R-321 to MEVNI.
OBROD 1G	Climb on JDW R-155 to 4000' , turn LEFT, along JDW 15 DME arc, intercept JDW R-038 to OBROD.
SENGO 1G	Climb on JDW R-155 to 4000' , turn LEFT, along JDW 15 DME arc, intercept JDW R-038, turn LEFT, along JDW 25 DME arc, intercept JDW R-015 to SENGO.
VATAS 1G	Climb on JDW R-155 to 4000' , turn RIGHT, along JDW 15 DME arc, intercept JDW R-290, turn RIGHT, along JDW 25 DME arc, intercept JDW R-338 to VATAS.

OEJN/JED
KING ABDULAZIZ INTL

5 MAR 10

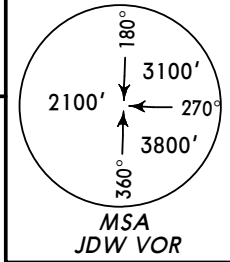
13

JEDDAH, SAUDI ARABIA

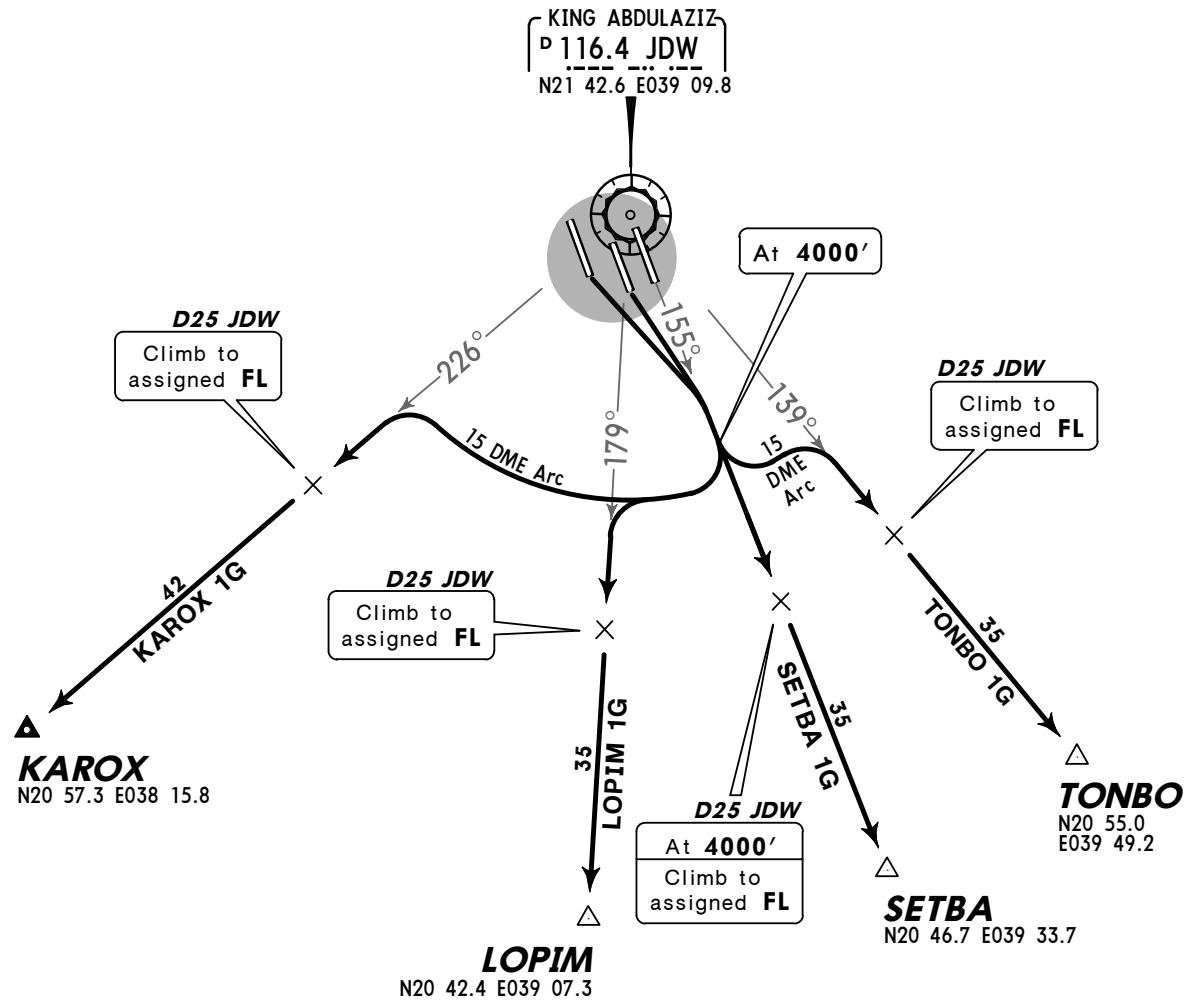
SID

Apt Elev
48'

Trans level: FL150 Trans alt: 13000'
Contact JEDDAH Approach immediately after take-off.



**KAROX 1G [KARO1G]
LOPIM 1G [LOPI1G]
SETBA 1G [SETB1G]
TONBO 1G [TONB1G]**
**RWYS 16C/R DEPARTURES
TO SOUTHEAST, SOUTH & SOUTHWEST**



These SIDs require a minimum climb gradient of 286' per NM.

Gnd speed-KT	75	100	150	200	250	300
286' per NM	357	477	715	953	1192	1430

If unable to comply with SID advise ATC prior to take-off.



SID	ROUTING
KAROX 1G	Climb on JDW R-155 to 4000', turn RIGHT, along JDW 15 DME arc, intercept JDW R-226 to KAROX.
LOPIM 1G	Climb on JDW R-155 to 4000', turn RIGHT, along JDW 15 DME arc, intercept JDW R-179 to LOPIM.
SETBA 1G	Climb on JDW R-155 to 4000', maintain 4000' to D25 JDW, then to SETBA.
TONBO 1G	Climb on JDW R-155 to 4000', turn LEFT, along JDW 15 DME arc, intercept JDW R-139 to TONBO.

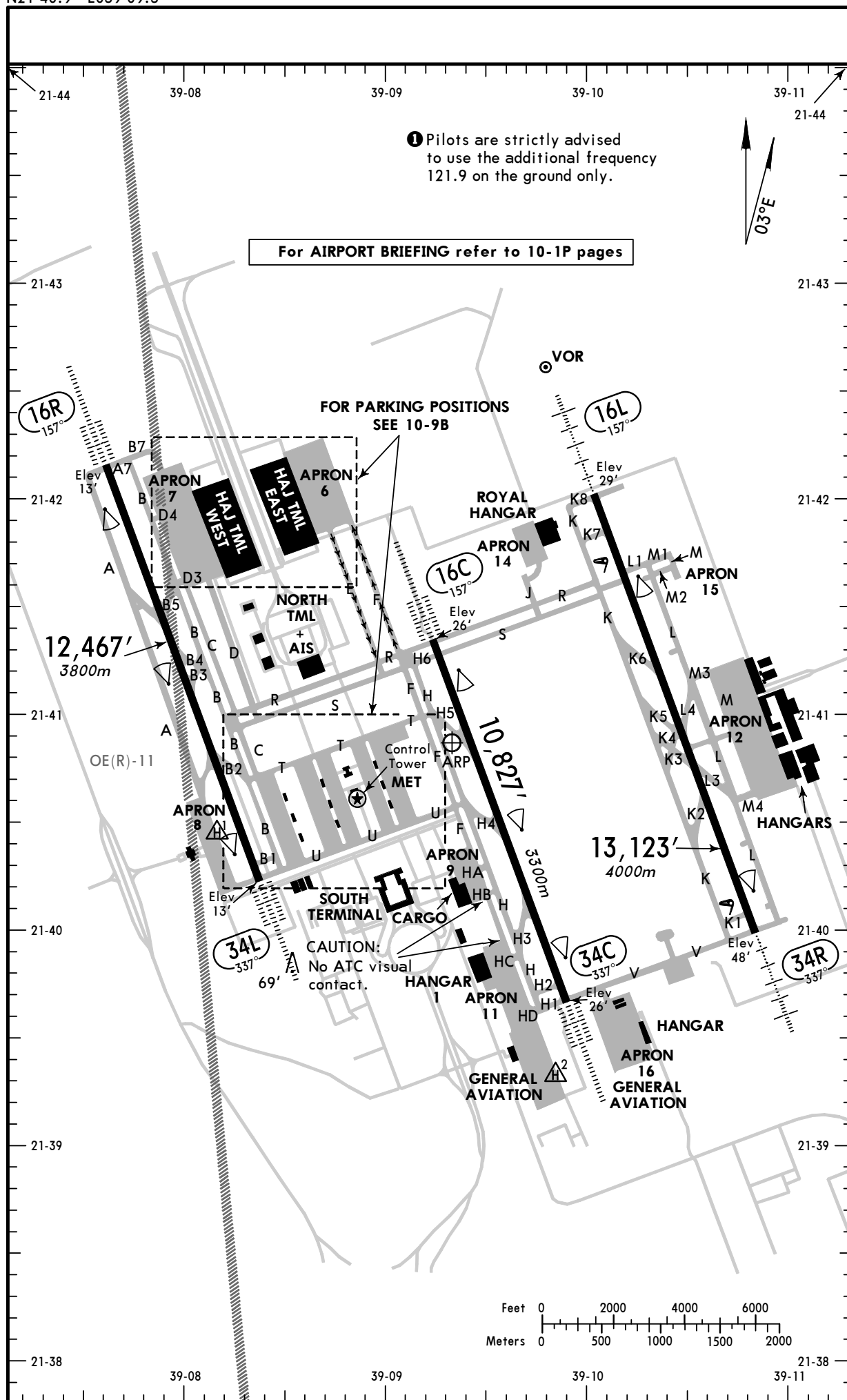
OEJN/JED

Apt Elev 48'
N21 40.9 E039 09.3

2 JUL 10 16

JEDDAH, SAUDI ARABIA

KING ABDULAZIZ INTL

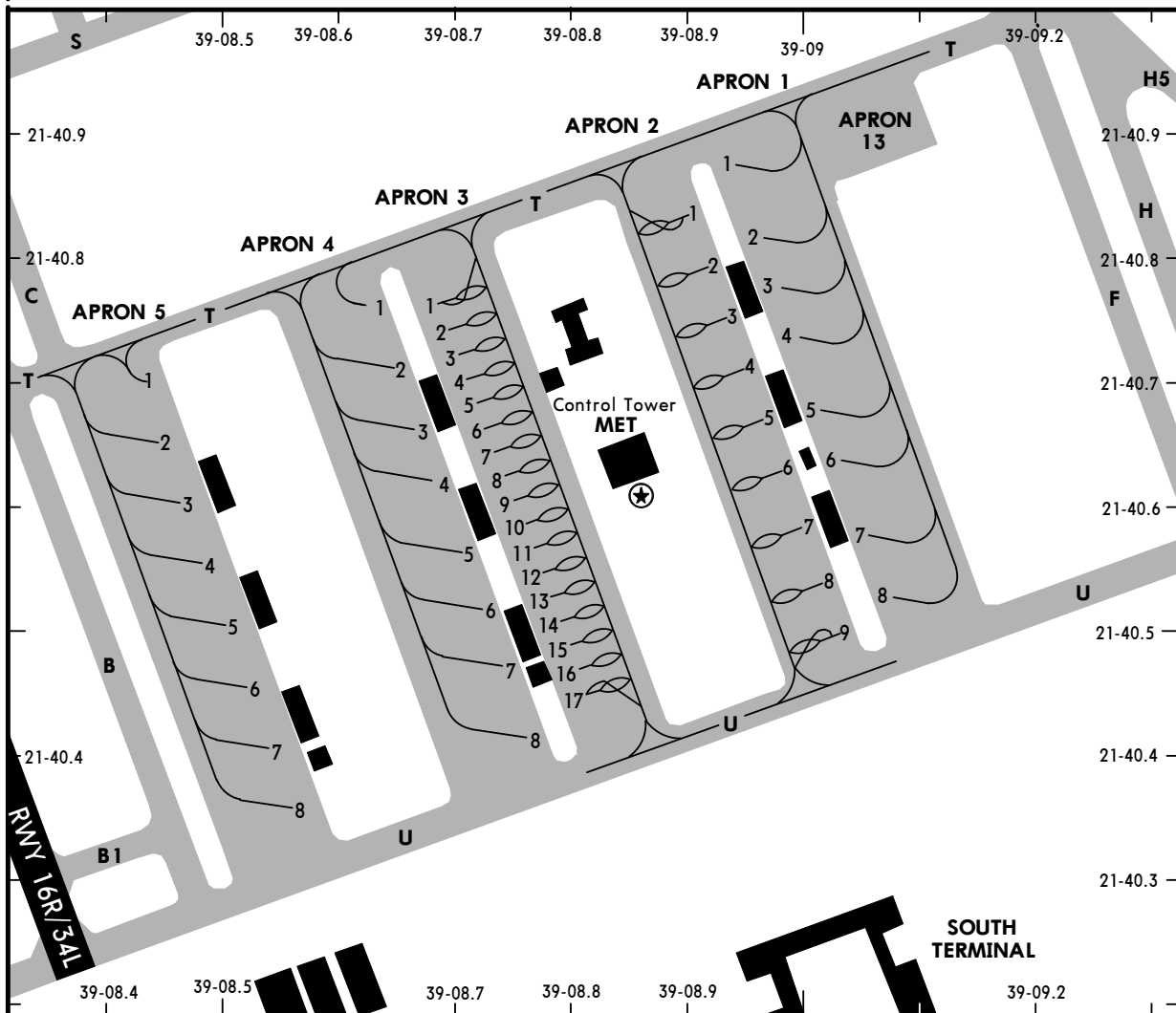
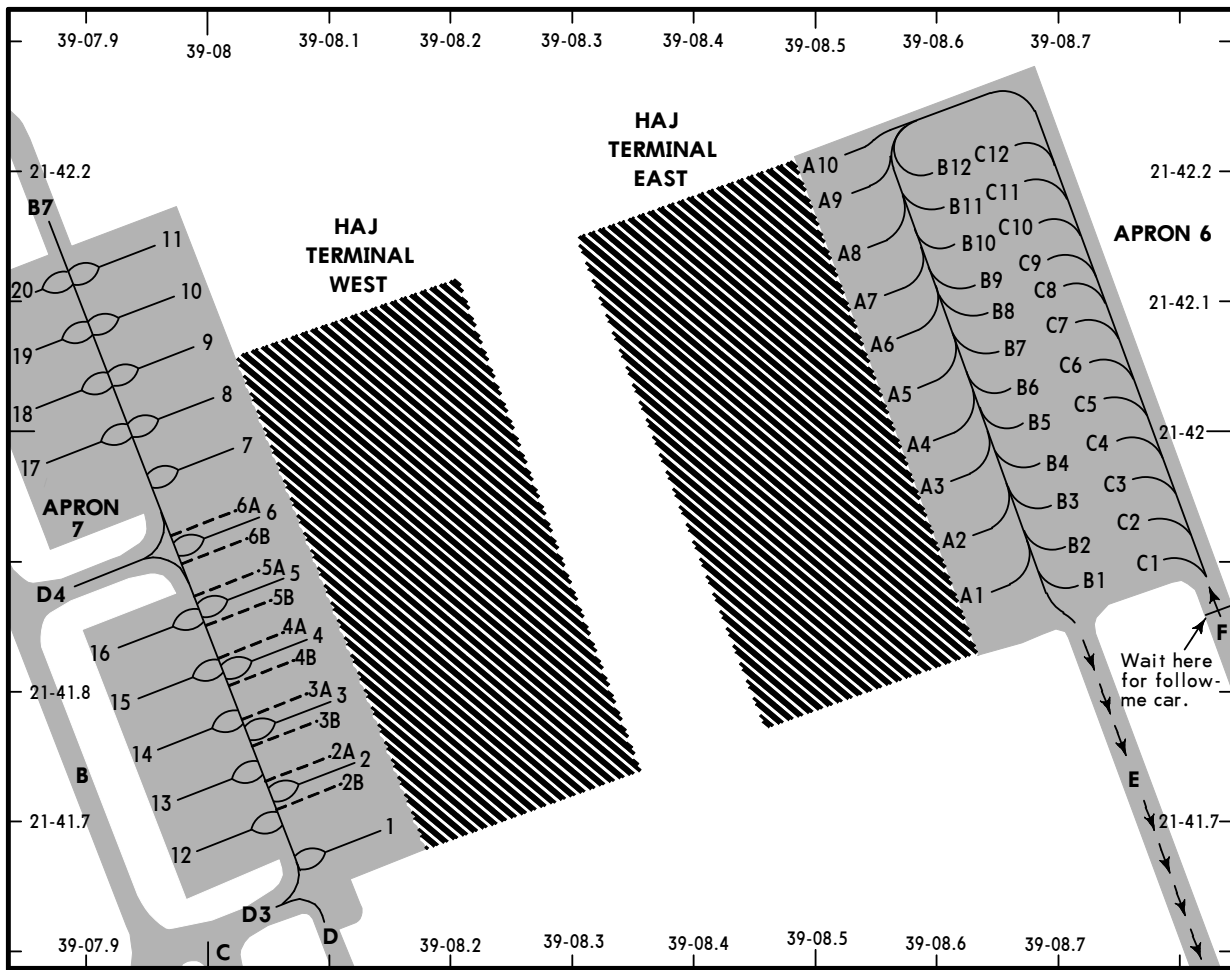


OEJN/JED

JEDDAH, SAUDI ARABIA
KING ABDULAZIZ INTL

2 JUL 10

17



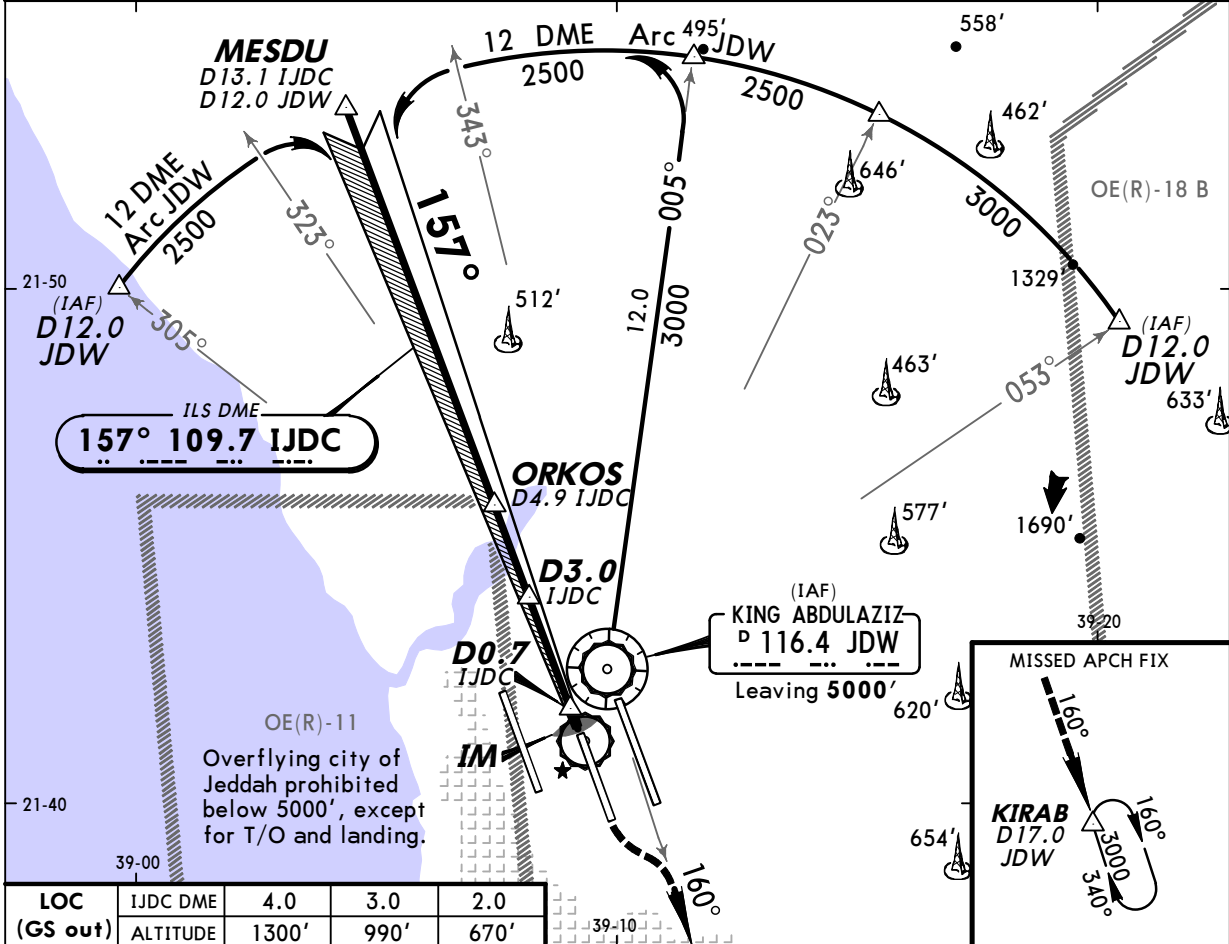
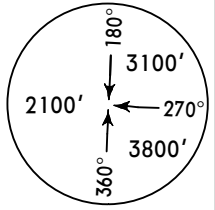
OEJN/JED
KING ABDULAZIZ INTL

5 MAR 10 (18)

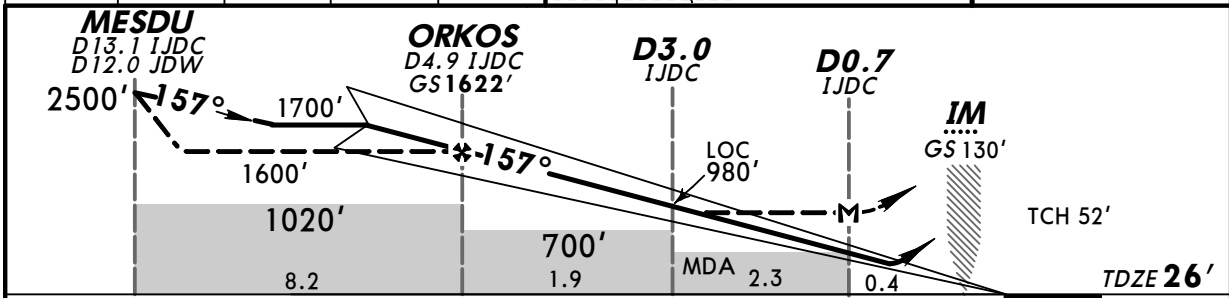
JEDDAH, SAUDI ARABIA
ILS DME Rwy 16C

BRIEFING STRIP

LOC IJDC 109.7	Final Apch Crs 157°	GS ORKOS 1622' (1596')	ILS DA(H) 226' (200')	Apt Elev 48' TDZE 26'
MISSED APCH: Climb via R-160 JDW to 3000' to KIRAB/D17.0 JDW and hold, or as directed.				
Alt Set: hPa	TDZ Elev: 1 hPa	Trans level: FL 150	Trans alt: 13000'	MSA JDW VOR



LOC (GS out)	IJDC DME	4.0	3.0	2.0
	ALTITUDE	1300'	990'	670'



Gnd speed-Kts	70	90	100	120	140	160	ALSF-II REIL VASI VASI	3000' JDW via 116.4 LT R-160	
ILS GS or LOC Descent Angle	3.00°	377	485	539	647	755			862
MAP at D0.7 IJDC									

STRAIGHT-IN LANDING RWY 16C				CIRCLE-TO-LAND	
ILS DA(H) 226' (200')		LOC (GS out) MDA(H) 420' (394')			
FULL	TDZ or CL out	ALS out		ALS out	
A					
B					
C	RVR 550m VIS 800m	RVR 720m VIS 800m	1200m	RVR 720m VIS 800m	RVR 1500m VIS 1600m
D				1200m	RVR 1800m VIS 2000m
NOT AUTHORIZED					

TERPS

OEJN/JED
KING ABDULAZIZ INTL

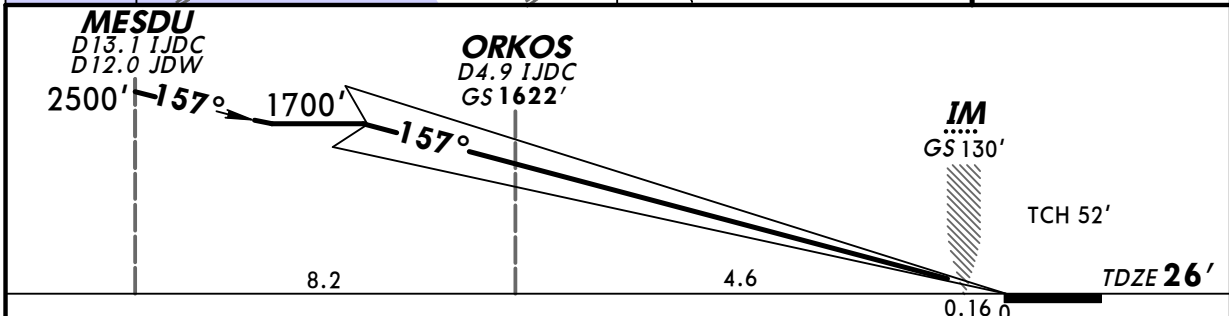
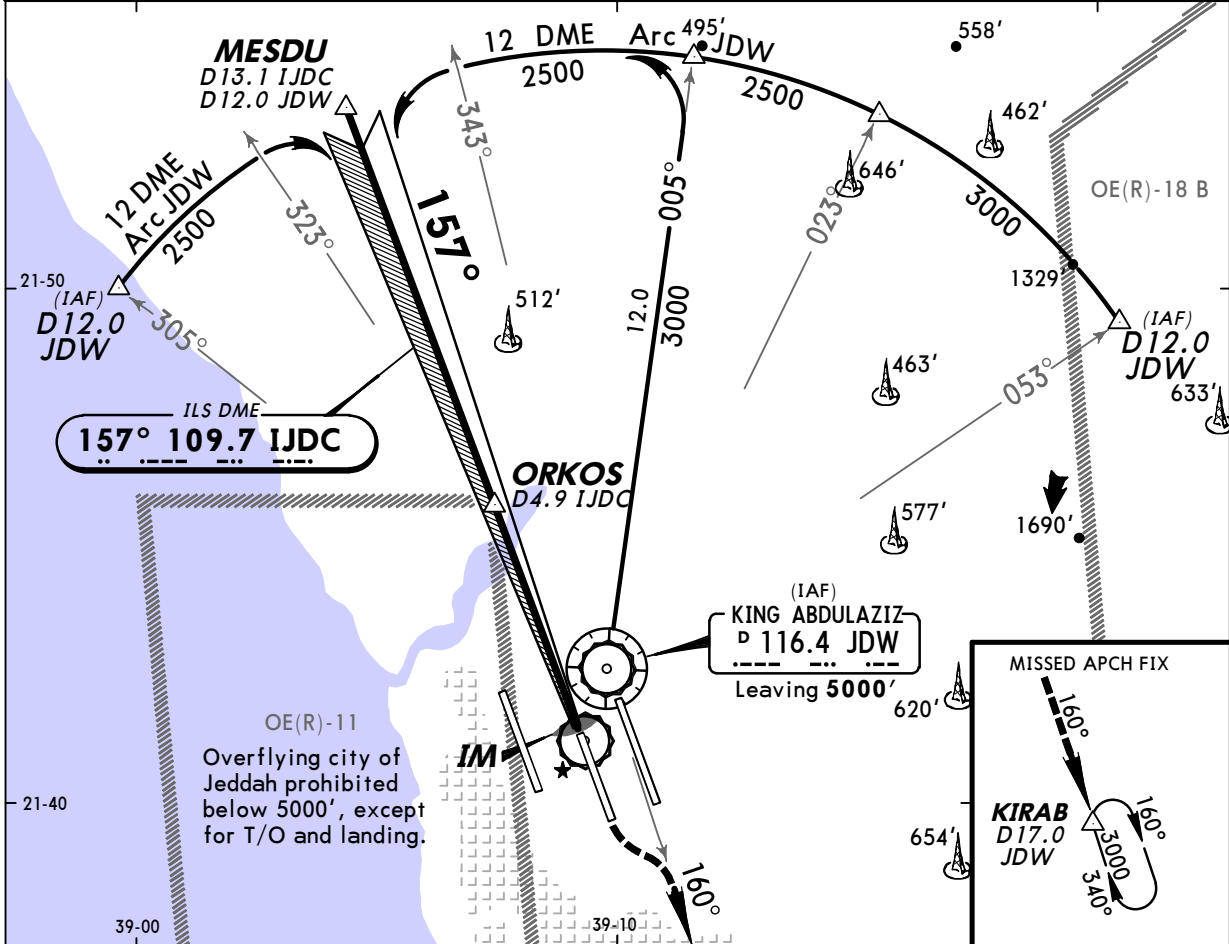
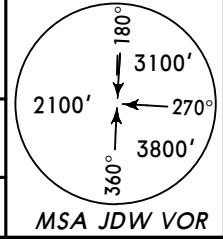
5 MAR 10

19

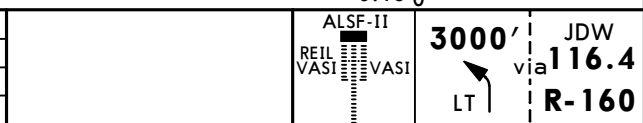
JEDDAH, SAUDI ARABIA
CAT II ILS DME Rwy 16C

BRIEFING STRIP

LOC IJDC 109.7	Final Apch Crs 157°	GS ORKOS 1622' (1596')	CAT II ILS RA 101' DA(H) 126' (100')	Apt Elev 48' TDZE 26'
MISSED APCH: Climb via R-160 JDW to 3000' to KIRAB/D17.0 JDW and hold, or as directed.				
Alt Set: hPa		TDZ Elev: 1 hPa	Trans level: FL 150	Trans alt: 13000'
Special Aircrew & Aircraft Certification Required.				



Gnd speed-Kts	70	90	100	120	140	160
GS	3.00°	377	485	539	647	755



STRAIGHT-IN LANDING RWY 16C CAT II ILS	
RA 101' DA(H) 126' (100')	RA 166' DA(H) 176' (150')
RVR 350m	RVR 500m

TERPS

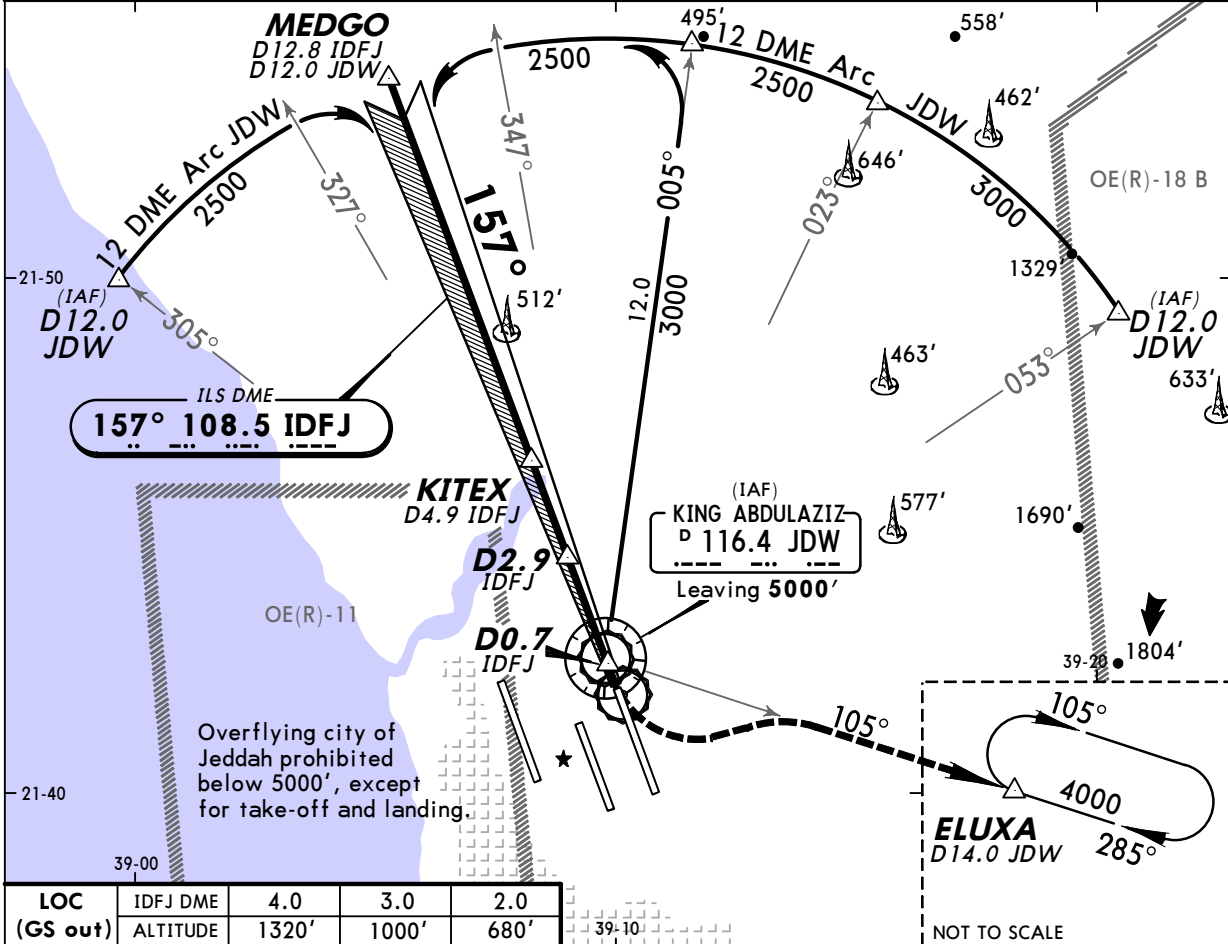
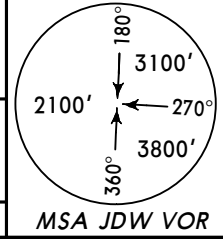
OEJN/JED
KING ABDULAZIZ INTL

5 MAR 10 (20)

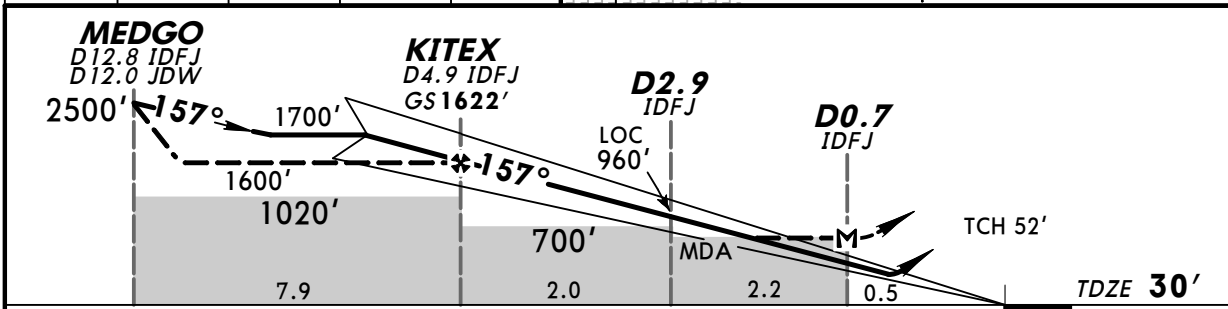
JEDDAH, SAUDI ARABIA
ILS DME Rwy 16L

BRIEFING STRIP

LOC IDFJ 108.5	Final Apch Crs 157°	GS KITEX 1622' (1592')	ILS DA(H) 230' (200')	Apt Elev 48' TDZE 30'
MISSED APCH: Climbing turn LEFT to 4000' via R-105 JDW to ELUXA/D14.0 JDW and hold, or as directed.				
Alt Set: hPa	TDZ Elev: 1 hPa	Trans level: FL 150	Trans alt: 13000'	MSA JDW VOR



LOC (GS out)	IDFJ DME	4.0	3.0	2.0
	ALTITUDE	1320'	1000'	680'



Gnd speed-Kts	70	90	100	120	140	160	HIALS REIL PAPI 4000' JDW via 116.4 LT R-105	
ILS GS or LOC Descent Angle	3.00°	377	485	539	647	755		862
MAP at D0.7 IDFJ								

STRAIGHT-IN LANDING RWY 16L				CIRCLE-TO-LAND	
ILS DA(H) 230' (200')		LOC (GS out) MDA(H) 420' (390')			
FULL	ALS out	ALS out			
A				A	
B	RVR 720m VIS 800m		RVR 720m VIS 800m	B	NOT AUTHORIZED
C		1200m	RVR 1500m VIS 1600m	C	
D			RVR 1800m VIS 2000m	D	

TERPS

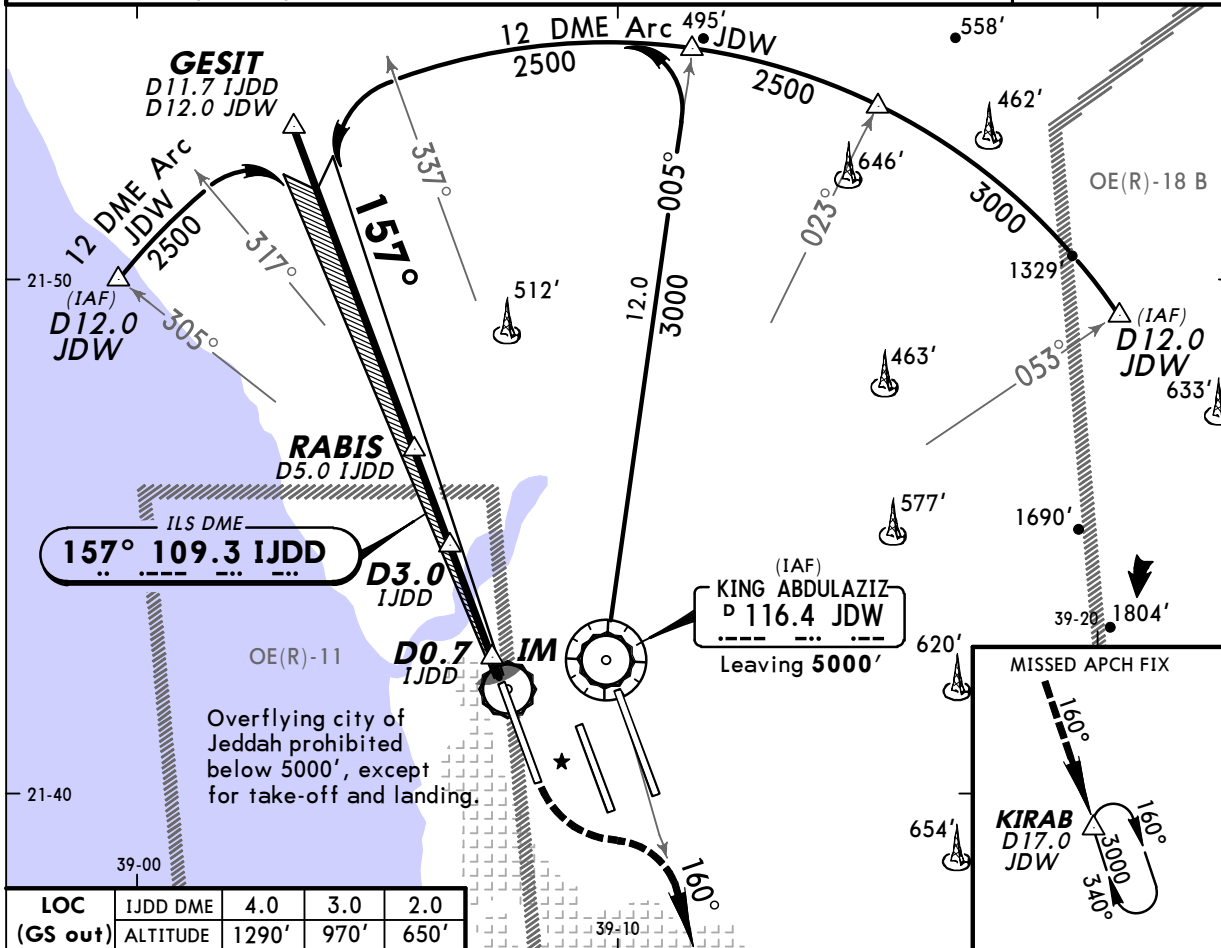
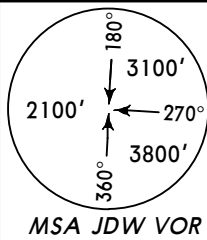
OEJN/JED
KING ABDULAZIZ INTL

5 MAR 10 (21)

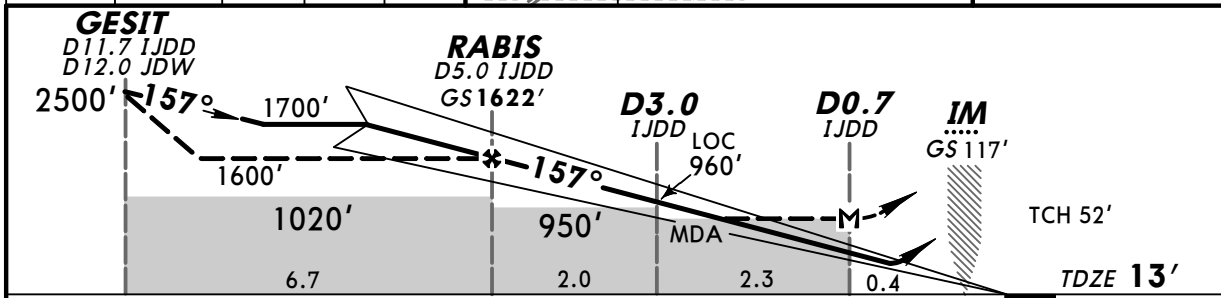
JEDDAH, SAUDI ARABIA
ILS DME Rwy 16R

BRIEFING STRIP

LOC IJDD 109.3	Final Apch Crs 157°	GS RABIS 1622' (1609')	ILS DA(H) 213' (200')	Apt Elev 48' TDZE 13'
MISSED APCH: Climbing turn LEFT to 3000' via R-160 to KIRAB/ D17.0 JDW and hold, or as directed.				
Alt Set: hPa		TDZ Elev: 0 hPa	Trans level: FL 150	Trans alt: 13000'
LOC unusable beyond rwy 16R threshold.				



LOC	IJDD DME	4.0	3.0	2.0
(GS out)	ALTITUDE	1290'	970'	650'



Gnd speed-Kts	70	90	100	120	140	160	ALSF-II REIL VASI VASI 3000' JDW via 116.4 KIRAB LT R-160	
ILS GS or LOC Descent Angle	3.00°	377	485	539	647	755		862
MAP at D0.7 IJDD								

STRAIGHT-IN LANDING RWY 16R ILS DA(H) 213' (200')				LOC (GS out) MDA(H) 420' (407')		CIRCLE-TO-LAND	
FULL		TDZ or CL out	ALS out	ALS out			
A				RVR 720m	RVR 1500m	A	NOT AUTHORIZED
B				VIS 800m	VIS 1600m	B	
C	RVR 550m VIS 800m	RVR 720m VIS 800m	1200m	1200m	RVR 1800m VIS 2000m	C	
D						D	

TERPS

OEJN/JED
KING ABDULAZIZ INTL

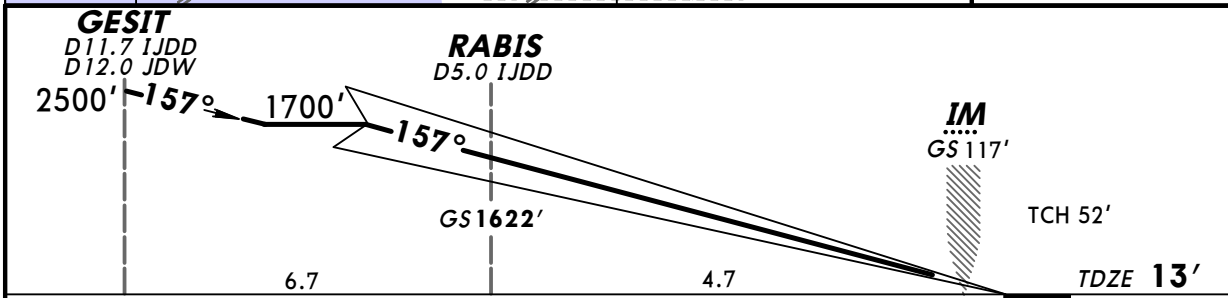
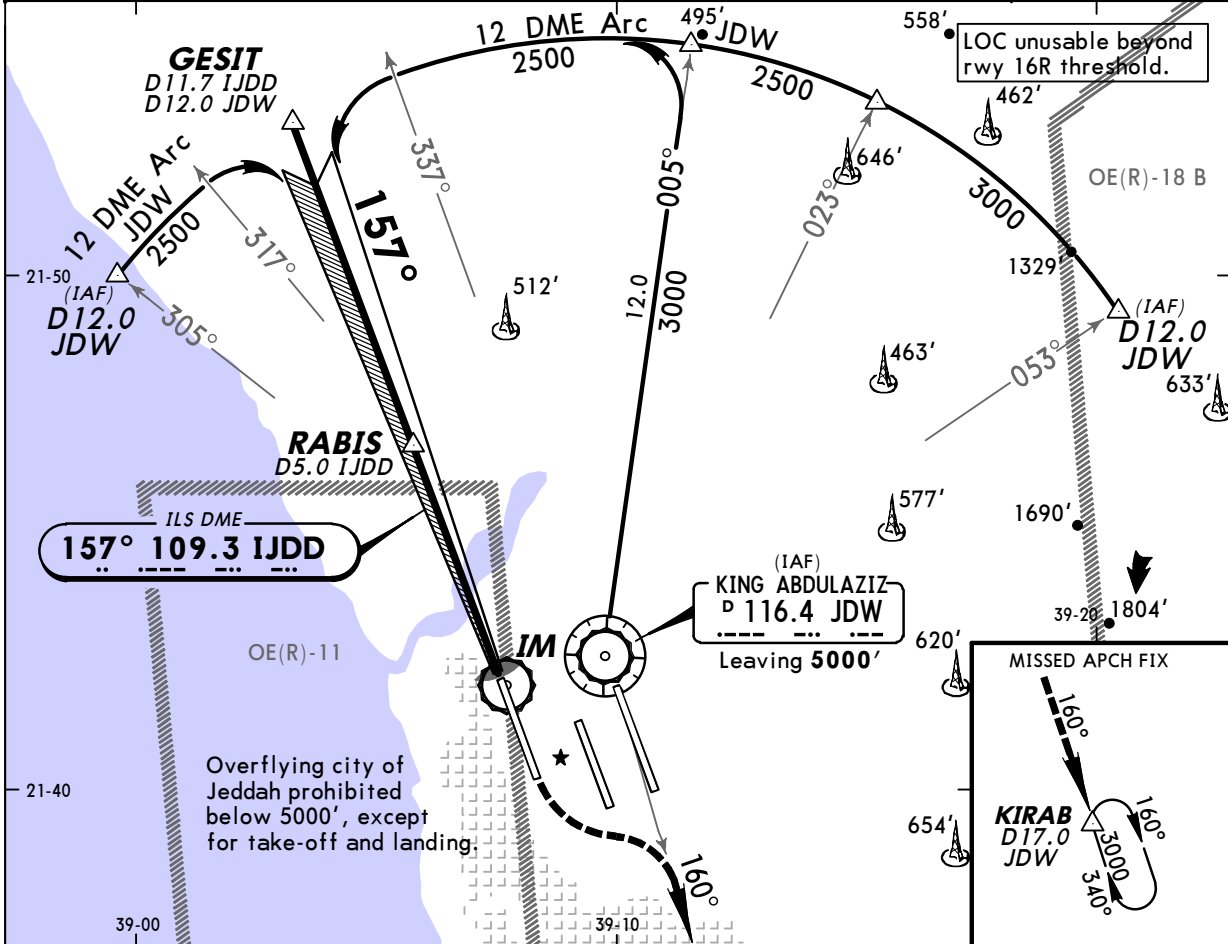
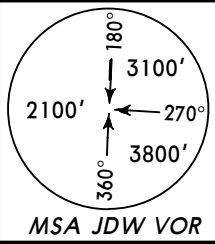
5 MAR 10

22

JEDDAH, SAUDI ARABIA
CAT II ILS DME Rwy 16R

BRIEFING STRIP

LOC IJDD 109.3	Final Apch Crs 157°	GS RABIS 1622' (1609')	CAT II ILS RA 103' DA(H) 113' (100')	Apt Elev 48' TDZE 13'
MISSED APCH: Climbing turn LEFT to 3000' via R-160 to KIRAB/ D17.0 JDW and hold, or as directed.				
Alt Set: hPa TDZ Elev: 0 hPa Trans level: FL 150 Trans alt: 13000'				
Special Aircrew & Aircraft Certification Required.				



Gnd speed-Kts	70	90	100	120	140	160	ALSF-II REIL VASI VASI	3000' JDW via R-160 116.4 R-160	KIRAB
GS	3.00°	377	485	539	647	755			

STRAIGHT-IN LANDING RWY 16R CAT II ILS	
RA 103' DA(H) 113' (100')	RA 154' DA(H) 163' (150')

RVR 350m	RVR 500m
-----------------	-----------------

TERPS

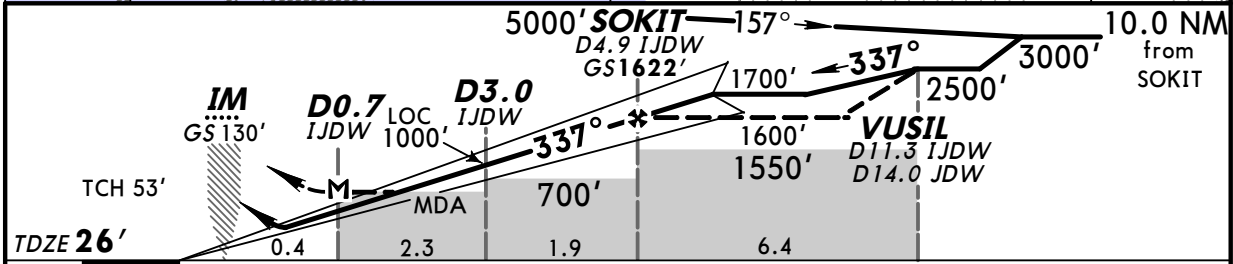
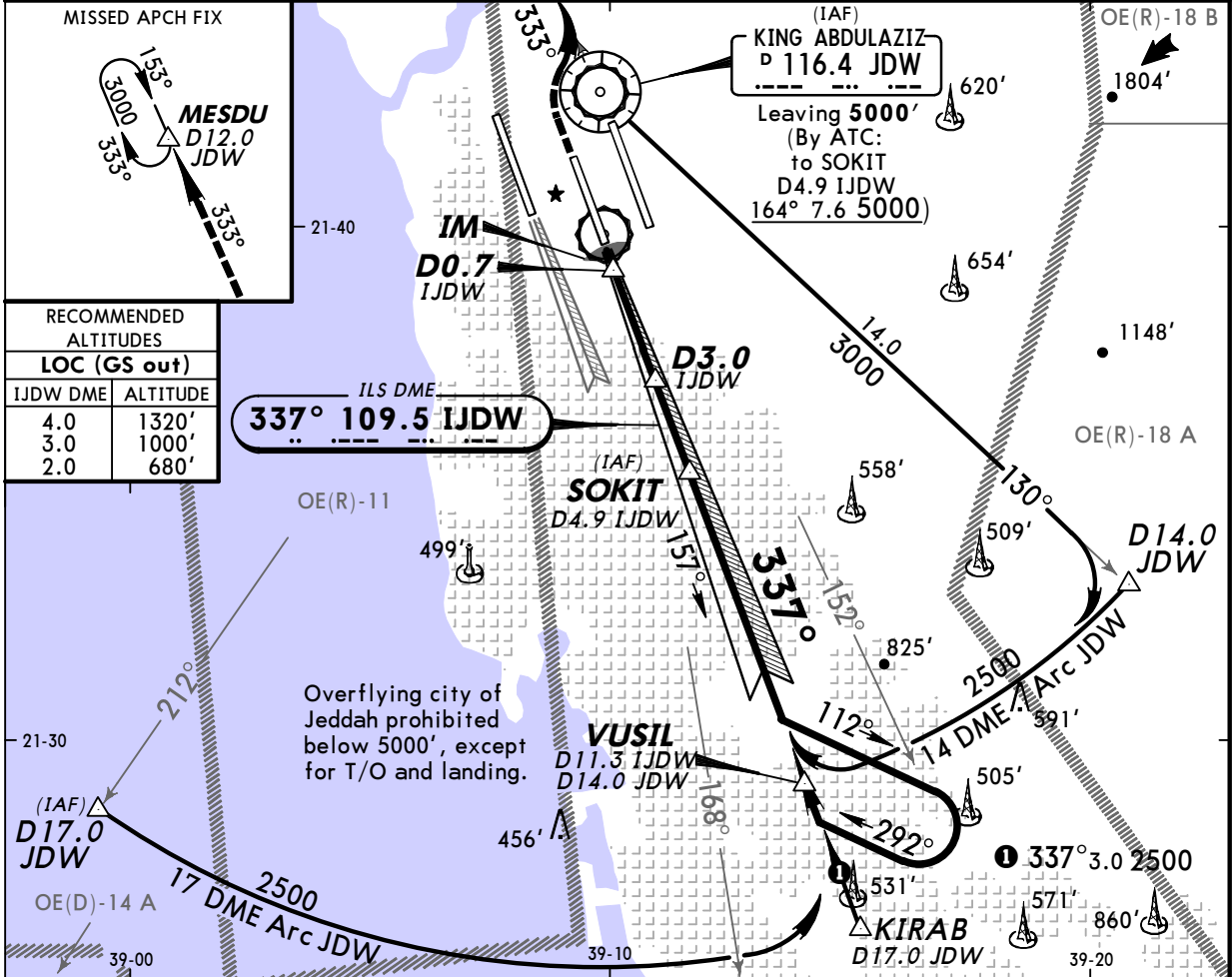
OEJN/JED
KING ABDULAZIZ INTL

5 MAR 10 23

JEDDAH, SAUDI ARABIA
ILS DME Rwy 34C

BRIEFING STRIP

LOC IJDW 109.5	Final Apch Crs 337°	GS SOKIT 1622' (1596')	ILS DA(H) 226' (200')	Apt Elev 48' TDZE 26'	
MISSED APCH: Climb to 3000' via R-333 JDW to MESDU/D12.0 JDW and hold; or when directed climb to 3000' via R-333 JDW, then climbing turn RIGHT to 5000' to JDW VOR and hold.					
Alt Set: hPa TDZ Elev: 1 hPa Trans level: FL 150 Trans alt: 13000'				MSA JDW VOR	
Simultaneous approach authorized with rwy 34L in VMC only.					



Gnd speed-Kts	70	90	100	120	140	160	ALSF-II REIL VASI VASI 3000' JDW via 116.4 RT R-333
ILS GS or LOC Descent Angle 3.00°	377	485	539	647	755	862	
MAP at D0.7 IJDW							

STRAIGHT-IN LANDING RWY 34C				CIRCLE-TO-LAND	
ILS DA(H) 226' (200')		LOC (GS out) MDA(H) 420' (394')		NOT AUTHORIZED	
FULL	TDZ or CL out	ALS out	ALS out		
A					
B	RVR 550m	RVR 720m	RVR 1500m		
C	VIS 800m	VIS 800m	VIS 1600m		
D		1200m	RVR 1800m		
			VIS 2000m		

TERPS

OEJN/JED
KING ABDULAZIZ INTL

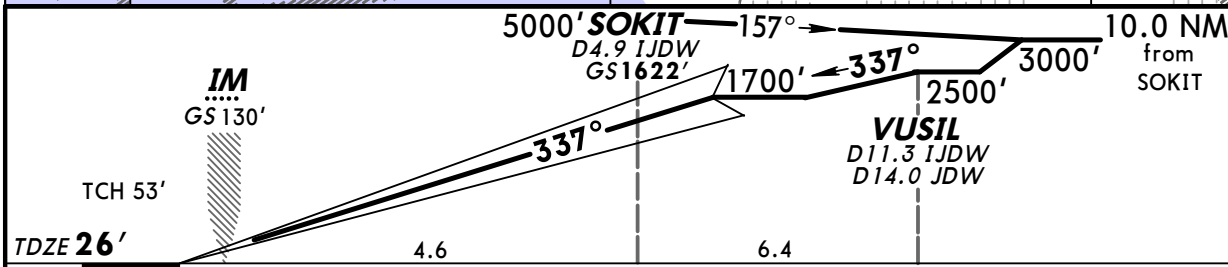
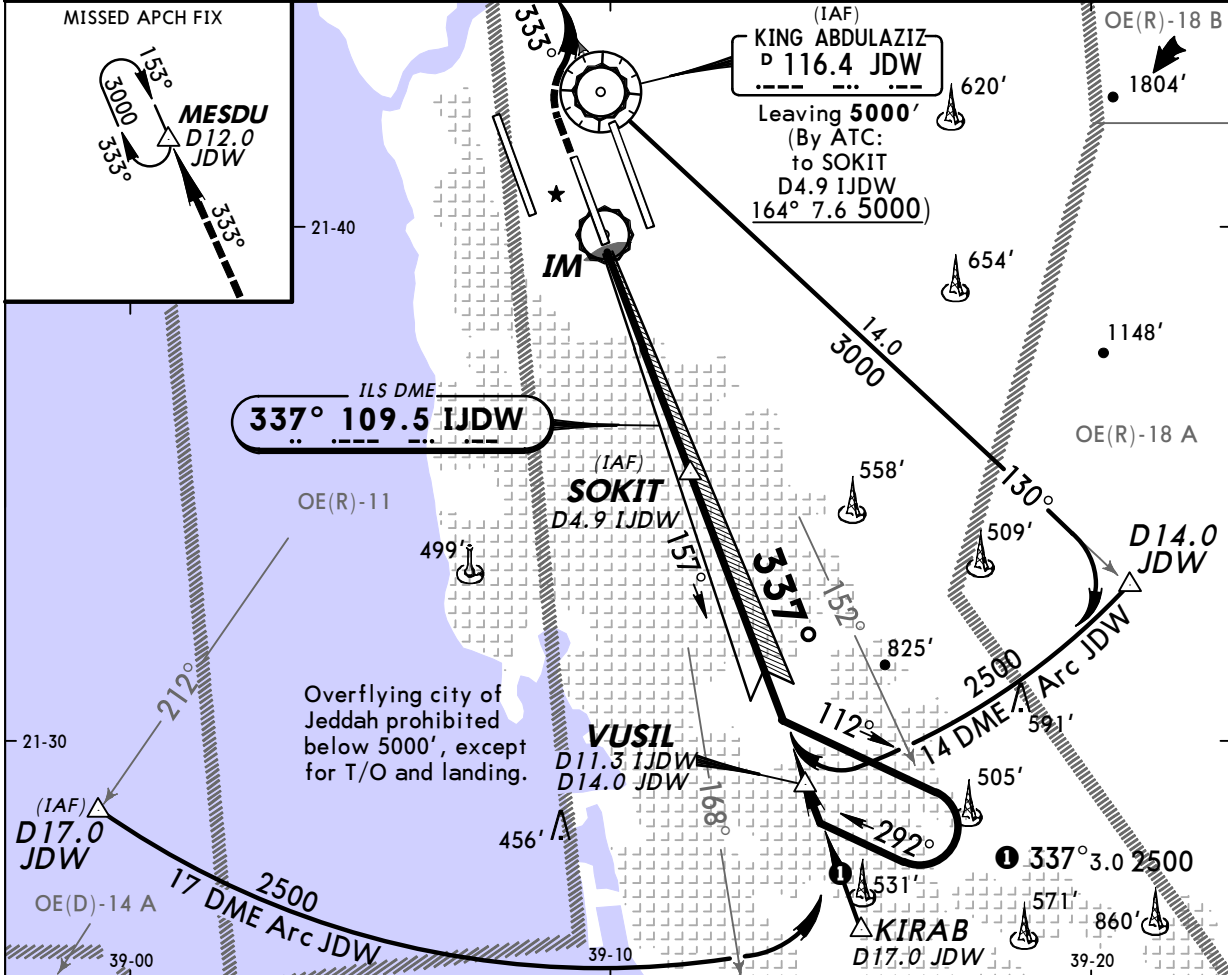
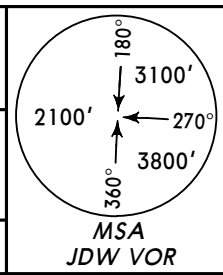
5 MAR 10

24

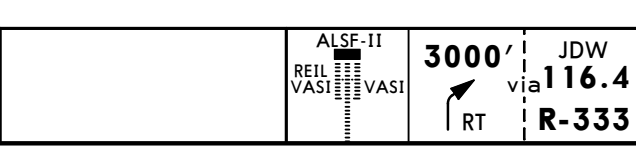
JEDDAH, SAUDI ARABIA
CAT II ILS DME Rwy 34C

BRIEFING STRIP

LOC IJDW 109.5	Final Apch Crs 337°	GS SOKIT 1622' (1596')	CAT II ILS RA 98' DA(H) 126' (100')	Apt Elev 48' TDZE 26'
<p>MISSED APCH: Climb to 3000' via R-333 JDW to MESDU/D12.0 JDW and hold; or when directed climb to 3000' via R-333 JDW, then climbing turn RIGHT to 5000' to JDW VOR and hold.</p>				
<p>Alt Set: hPa TDZ Elev: 1 hPa Trans level: FL 150 Trans alt: 13000'</p> <p>Special Aircrew & Aircraft Certification Required.</p>				



Gnd speed-Kts	70	90	100	120	140	160
GS 3.00°	377	485	539	647	755	862



STRAIGHT-IN LANDING RWY 34C CAT II ILS	
RA 98' DA(H) 126' (100')	RA 147' DA(H) 176' (150')
RVR 350m	RVR 500m

TERPS

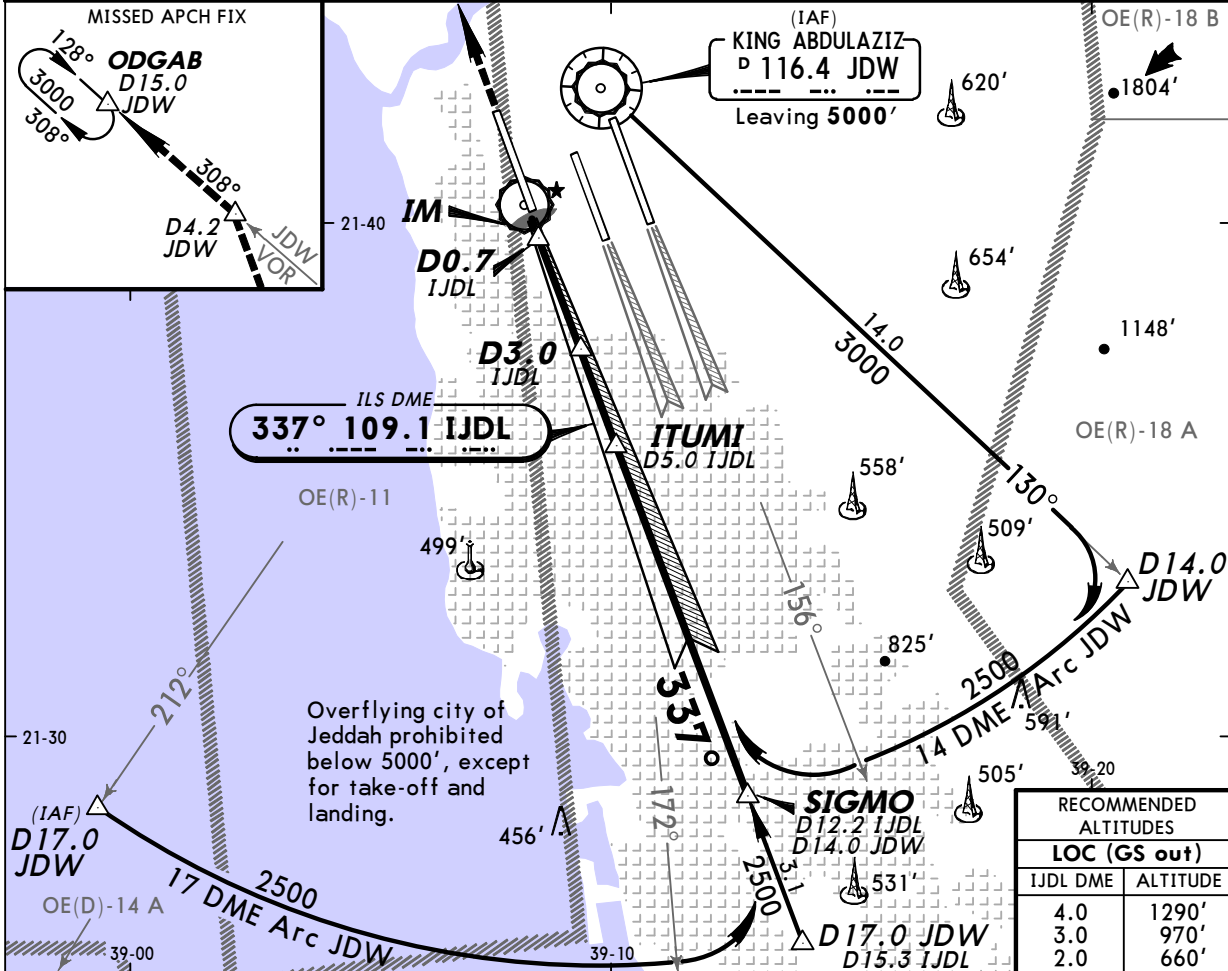
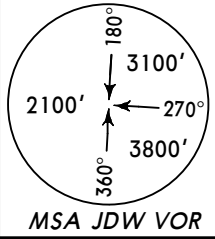
OEJN/JED
KING ABDULAZIZ INTL

2 JUL 10 (25)

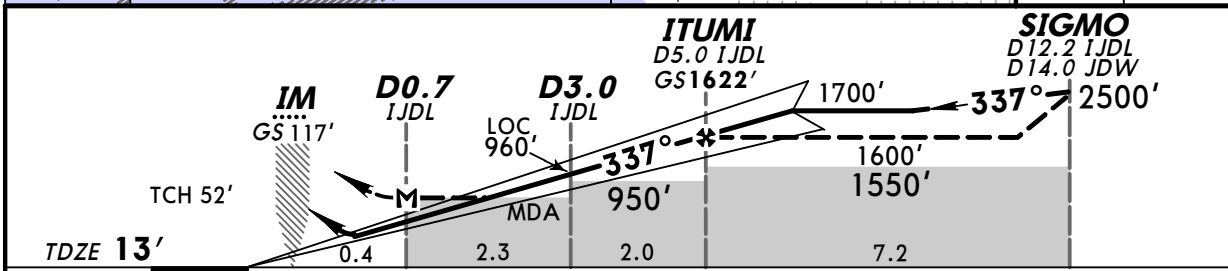
JEDDAH, SAUDI ARABIA
ILS DME Rwy 34L

BRIEFING STRIP

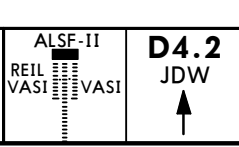
LOC IJDL 109.1	Final Apch Crs 337°	GS ITUMI 1622' (1609')	ILS DA(H) 213' (200')	Apt Elev 48' TDZE 13'
MISSED APCH: Climbing STRAIGHT AHEAD to D4.2 JDW turn LEFT to 3000' via R-308 JDW to ODGAB/D15.0 JDW and hold, or as directed.				
Alt Set: hPa TDZ Elev: 0 hPa Trans level: FL 150 Trans alt: 13000'				
Simultaneous approach authorized with either rwy 34C or rwy 34R in VMC only.				



RECOMMENDED ALTITUDES	
LOC (GS out)	
IJDL DME	ALTITUDE
4.0	1290'
3.0	970'
2.0	660'



Gnd speed-Kts	70	90	100	120	140	160
ILS GS or LOC Descent Angle	3.00°	377	485	539	647	755
MAP at D0.7 IJDL						



STRAIGHT-IN LANDING RWY 34L				CIRCLE-TO-LAND			
ILS		LOC (GS out)		ILS		LOC (GS out)	
DA(H) 213' (200')		MDA(H) 420' (407')		DA(H) 213' (200')		MDA(H) 420' (407')	
FULL	TDZ or CL out	ALS out		ALS out			
A				RVR 720m	RVR 1500m	A	NOT AUTHORIZED
B				VIS 800m	VIS 1600m	B	
C	RVR 550m VIS 800m	RVR 720m VIS 800m	1200m			C	
D				1200m	RVR 1800m VIS 2000m	D	

TERPS

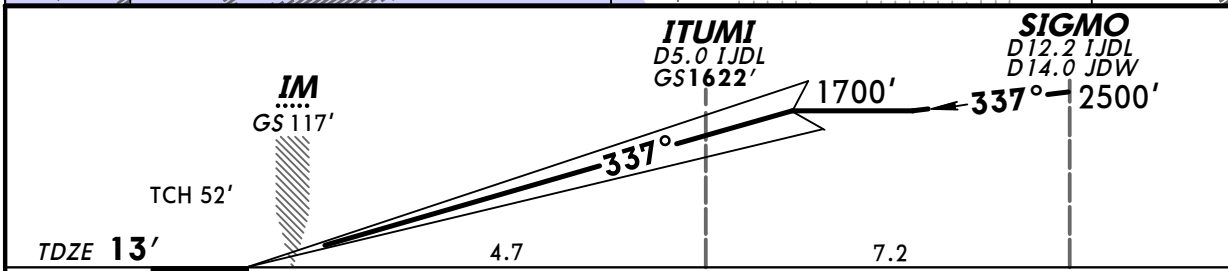
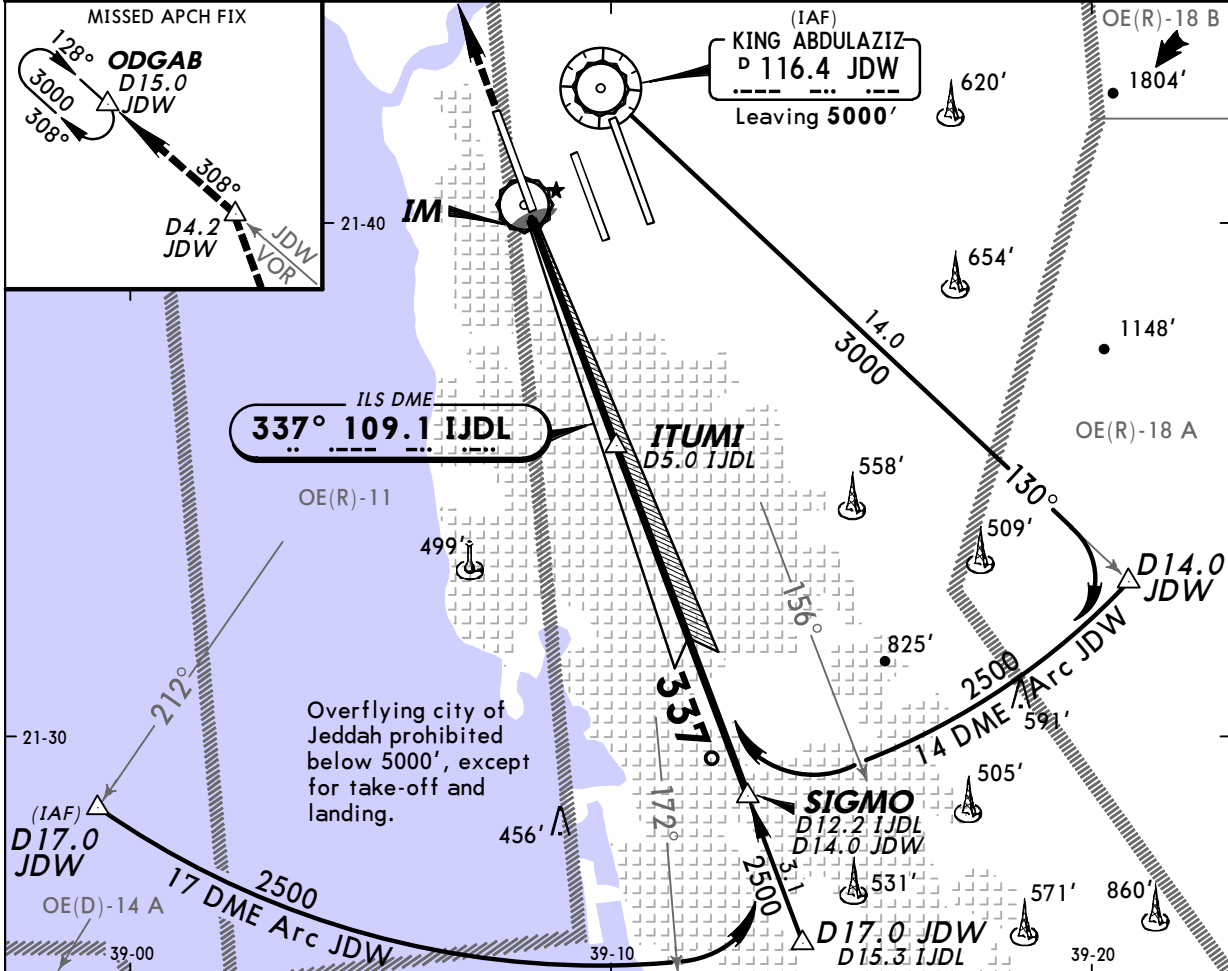
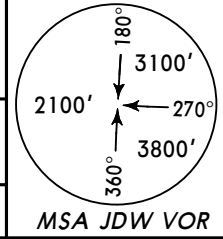
OEJN/JED
KING ABDULAZIZ INTL

2 JUL 10 26

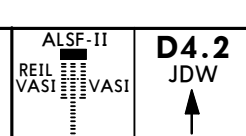
JEDDAH, SAUDI ARABIA
CAT II ILS DME Rwy 34L

BRIEFING STRIP

LOC IJDL 109.1	Final Apch Crs 337°	GS ITUMI 1622' (1609')	CAT II ILS RA 102' DA(H) 113' (100')	Apt Elev 48' TDZE 13'
MISSED APCH: Climbing STRAIGHT AHEAD to D4.2 JDW turn LEFT to 3000' via R-308 JDW to ODGAB/D15.0 JDW and hold, or as directed.				
Alt Set: hPa TDZ Elev: 0 hPa Trans level: FL 150 Trans alt: 13000' Special Aircrew & Aircraft Certification Required.				



Gnd speed-Kts	70	90	100	120	140	160	
GS	3.00°	377	485	539	647	755	862



TERPS

STRAIGHT-IN LANDING RWY 34L CAT II ILS	
RA 102' DA(H) 113' (100')	RA 152' DA(H) 163' (150')
RVR 350m	RVR 500m

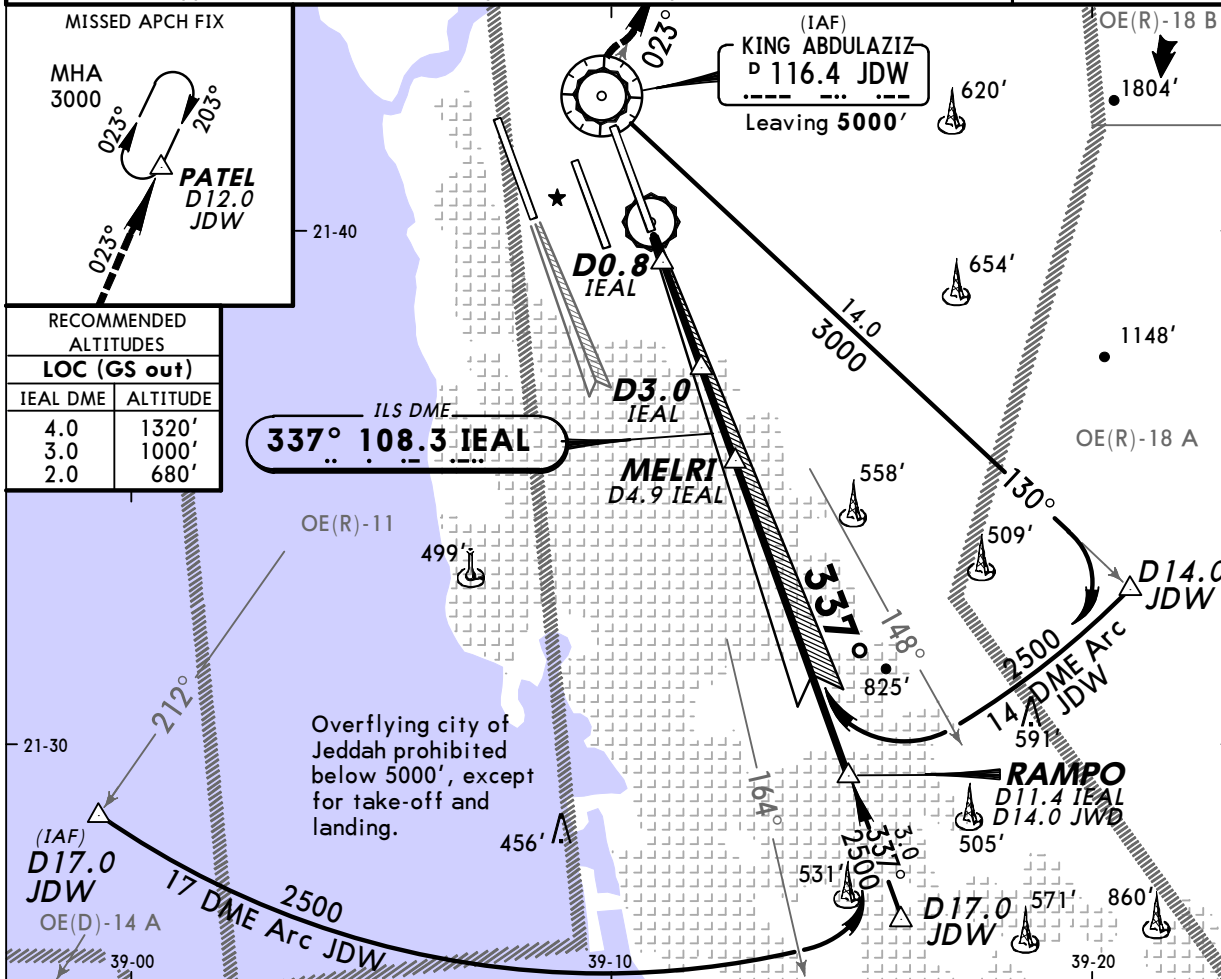
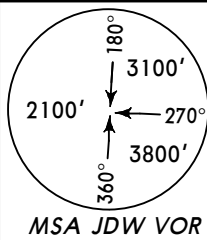
OEJN/JED
KING ABDULAZIZ INTL

5 MAR 10 27

JEDDAH, SAUDI ARABIA
ILS DME Rwy 34R

BRIEFING STRIP

LOC IEAL 108.3	Final Apch Crs 337°	GS MELRI 1617' (1569')	ILS DA(H) 248' (200')	Apt Elev 48' TDZE 48'
MISSED APCH: Climb to JDW VOR, then climbing turn RIGHT to 3000' via R-023 JDW to PATEL/D12.0 JDW and hold, or as directed.				
Alt Set: hPa TDZ Elev: 2 hPa Trans level: FL 150 Trans alt: 13000'				
Simultaneous approach authorized with rwy 34L in VMC only.				



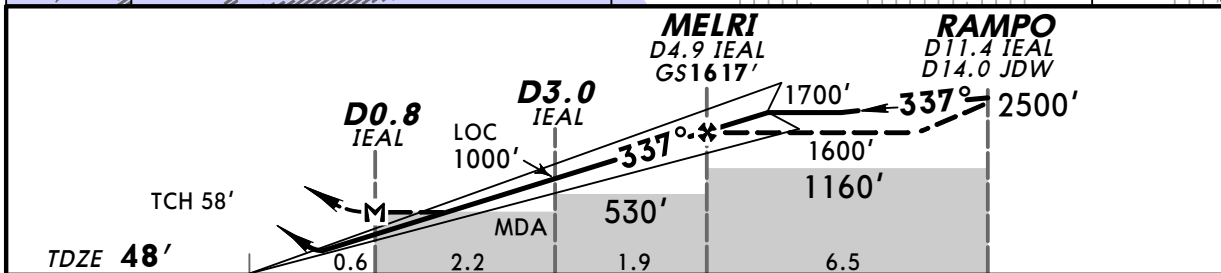
MISSED APCH FIX

MHA 3000

PATEL D12.0 JDW

RECOMMENDED ALTITUDES

LOC (GS out)	ALTITUDE
IEAL DME 4.0	1320'
3.0	1000'
2.0	680'



Gnd speed-Kts	70	90	100	120	140	160	HIALS	JDW 116.4	3000'	JDW 116.4
ILS GS or LOC Descent Angle	3.00°	377	485	539	647	755	REIL PAPI	↑	RT	via R-023
MAP at D0.8 IEAL										

STRAIGHT-IN LANDING RWY 34R				CIRCLE-TO-LAND	
ILS		LOC (GS out)			
DA(H) 248' (200')		MDA(H) 420' (372')			
FULL	ALS out	FULL	ALS out		
A				A	
B	RVR 720m VIS 800m		RVR 720m VIS 800m	B	NOT AUTHORIZED
C		1200m	RVR 1500m VIS 1600m	C	
D			RVR 1800m VIS 2000m	D	

TERPS

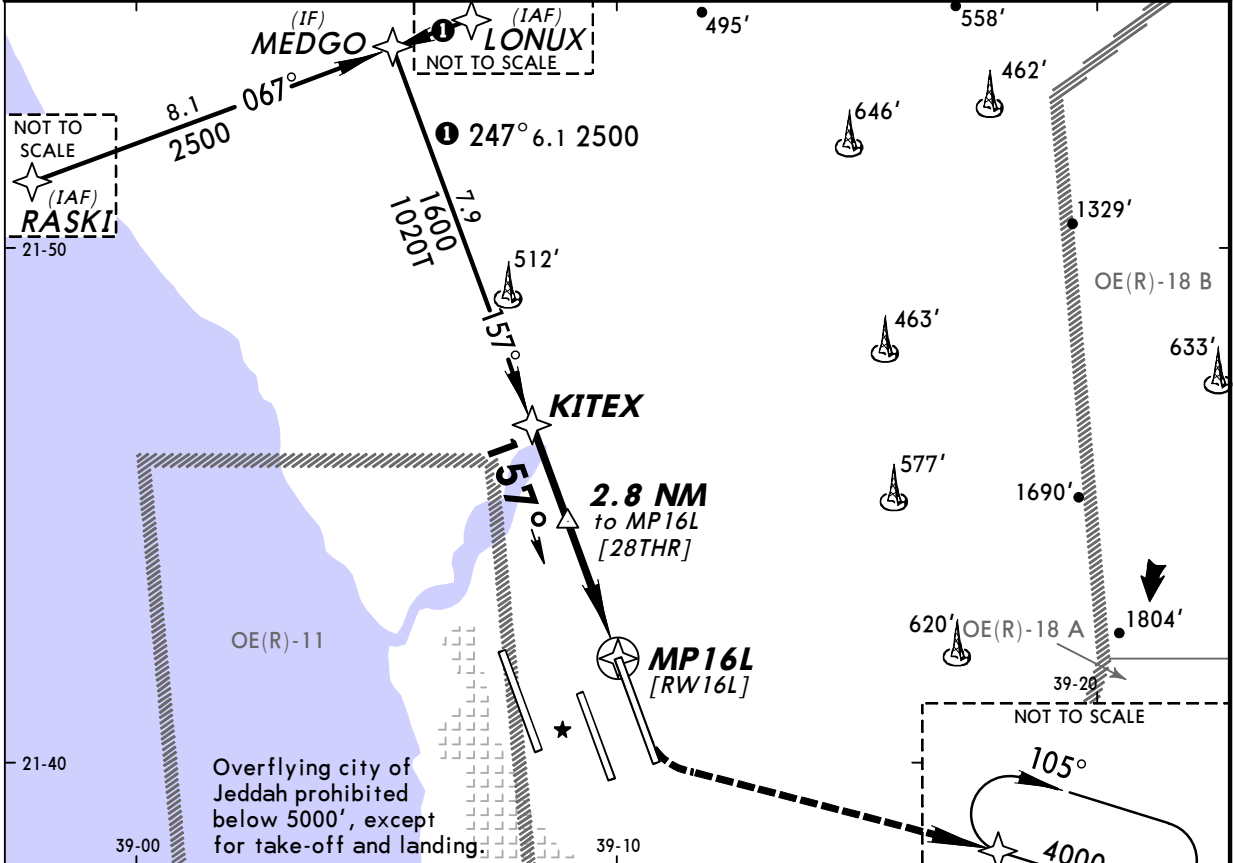
OEJN/JED
KING ABDULAZIZ INTL

5 MAR 10 (29)

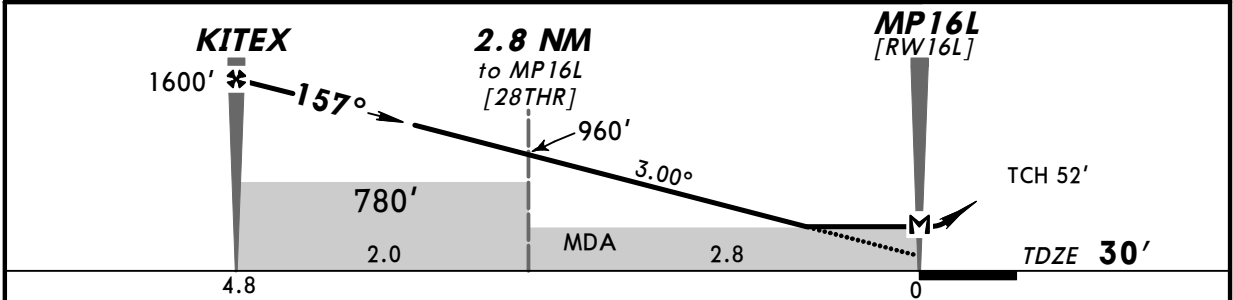
JEDDAH, SAUDI ARABIA
RNAV (GNSS) Rwy 16L

BRIEFING STRIP

RNAV	Final Apch Crs 157°	Procedure Alt KITEX 1600' (1570')	MDA(H) 420' (390')	Apt Elev 48' TDZE 30'	3800'
MISSED APCH: Climb to 700', then climbing turn LEFT to 4000' direct to ELUXA and hold.					
Alt Set: hPa	TDZ Elev: 1 hPa	Trans level: FL 150	Trans alt: 13000'	MSA MP16L	



Dist to MP16L	4.0	3.0	2.0	1.0	ELUXA 4000 285°
ALTITUDE	1360'	1040'	720'	400'	



Gnd speed-Kts	70	90	100	120	140	160	HIALS REIL PAPI 700' ↑ 4000' ↶ LT ELUXA
Descent Angle 3.00°	372	478	531	637	743	849	
MAP at MP16L							

STRAIGHT-IN LANDING RWY 16L				CIRCLE-TO-LAND			
MDA(H) 420' (390')							
ALS out							
A					A		
B	RVR 720m VIS 800m			RVR 1500m VIS 1600m			NOT AUTHORIZED
C							
D	RVR 1500m VIS 1600m			RVR 1800m VIS 2000m			

TERPS

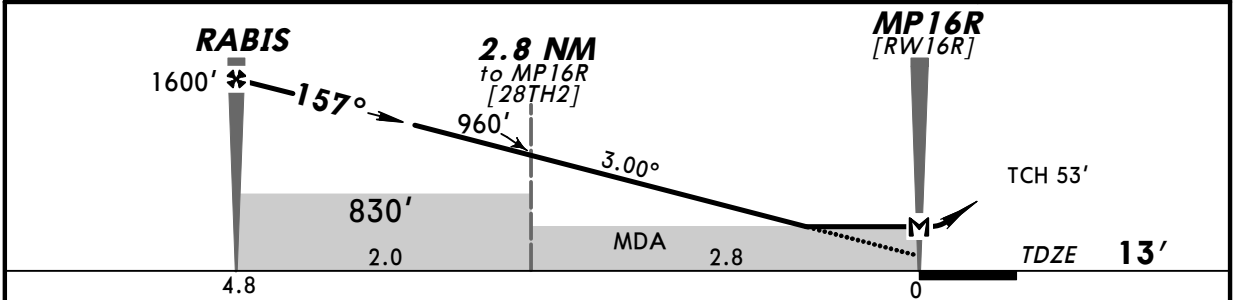
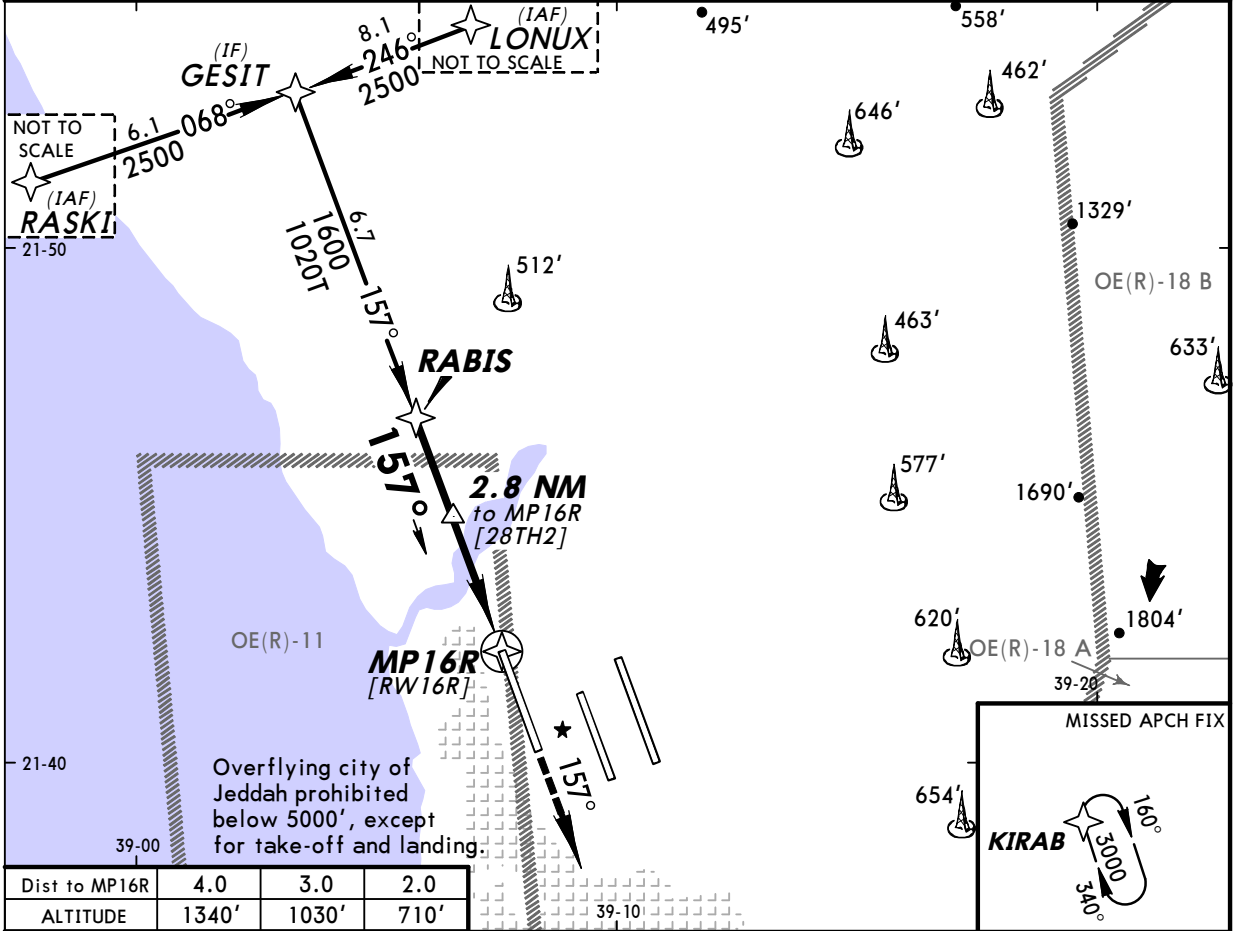
OEJN/JED
KING ABDULAZIZ INTL

5 MAR 10 (30)

JEDDAH, SAUDI ARABIA
RNAV (GNSS) Rwy 16R

BRIEFING STRIP

RNAV	Final Apch Crs 157°	Procedure Alt RABIS 1600' (1587')	MDA(H) 420' (407')	Apt Elev 48' TDZE 13'	3800'
MISSED APCH: Climb to 3000' direct to KIRAB and hold.					
Alt Set: hPa	TDZ Elev: 0 hPa	Trans level: FL 150	Trans alt: 13000'	MSA MP16R	



Gnd speed-Kts	70	90	100	120	140	160	ALSF-II REIL VASI VASI	3000'	D	KIRAB
Descent Angle 3.00°	372	478	531	637	743	849				
MAP at MP16R										

STRAIGHT-IN LANDING RWY 16R				CIRCLE-TO-LAND				
MDA(H) 420' (407')								
ALS out								
A	RVR 720m VIS 800m			RVR 1500m VIS 1600m			A	NOT AUTHORIZED
B							B	
C	1200m						C	
D	RVR 1500m VIS 1600m			RVR 1800m VIS 2000m			D	

TERPS

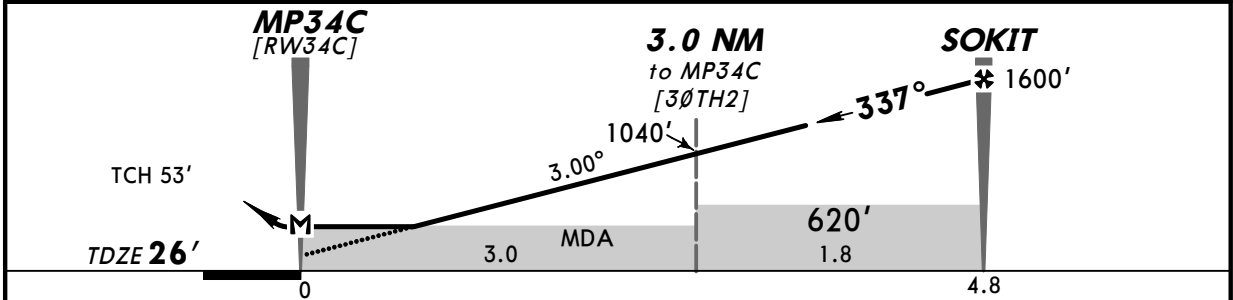
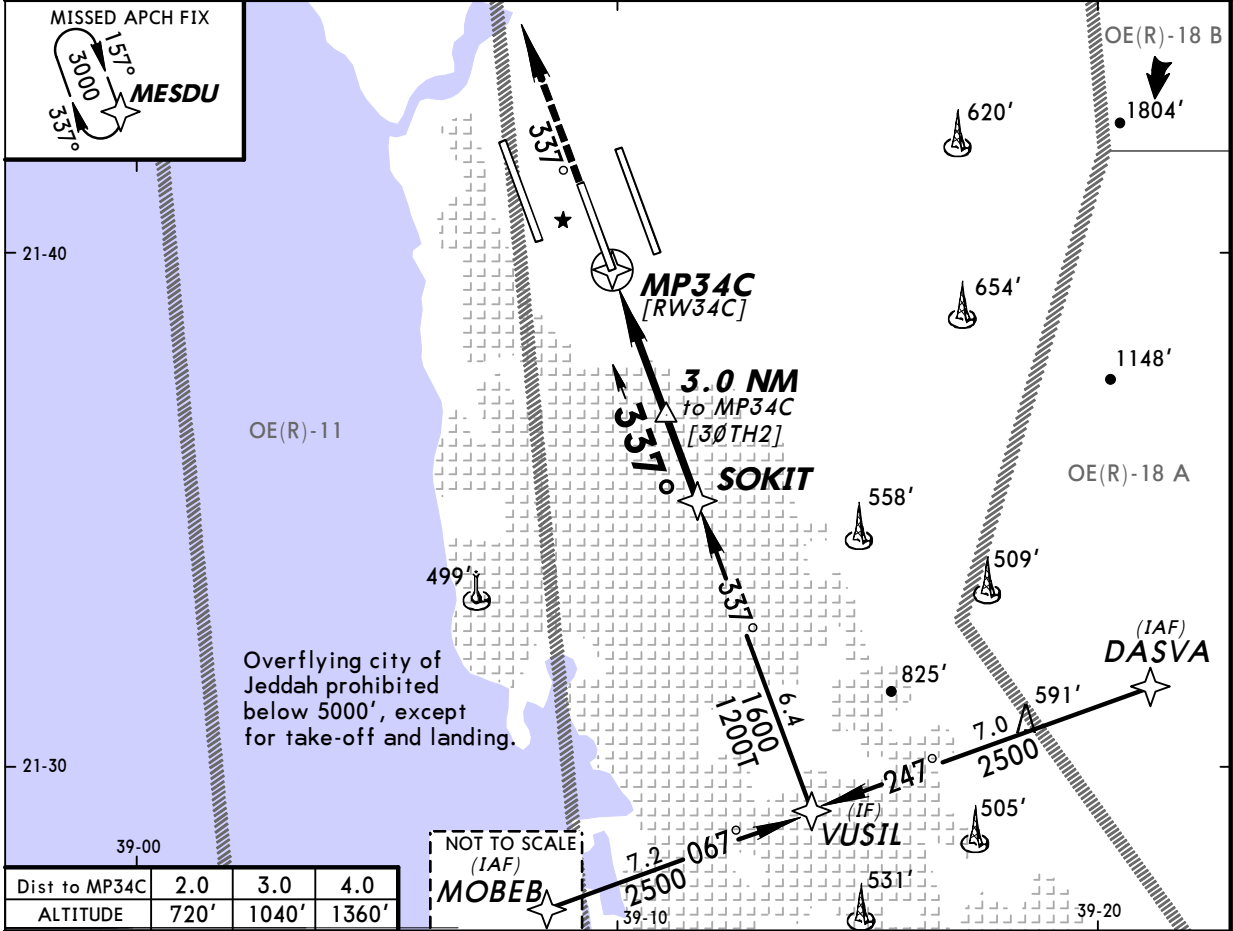
OEJN/JED
KING ABDULAZIZ INTL

5 MAR 10 (31)

JEDDAH, SAUDI ARABIA
RNAV (GNSS) Rwy 34C

BRIEFING STRIP

RNAV	Final Apch Crs 337°	Procedure Alt SOKIT 1600' (1574')	MDA(H) 420' (394')	Apt Elev 48' TDZE 26'	3800'
MISSED APCH: Climb to 3000' direct to MESDU and hold.					
Alt Set: hPa		TDZ Elev: 1 hPa		Trans level: FL 150	
				Trans alt: 13000'	
					MSA MP34C



Gnd speed-Kts	70	90	100	120	140	160	ALSF-II REIL VASI VASI	3000'	D → MESDU
Descent Angle	3.00°	372	478	531	637	743			
MAP at MP34C									

STRAIGHT-IN LANDING RWY 34C		CIRCLE-TO-LAND	
MDA(H) 420' (394')			
ALS out			

A			A
B	RVR 720m VIS 800m	RVR 1500m VIS 1600m	NOT AUTHORIZED
C			
D	RVR 1500m VIS 1600m	RVR 1800m VIS 2000m	

TERPS

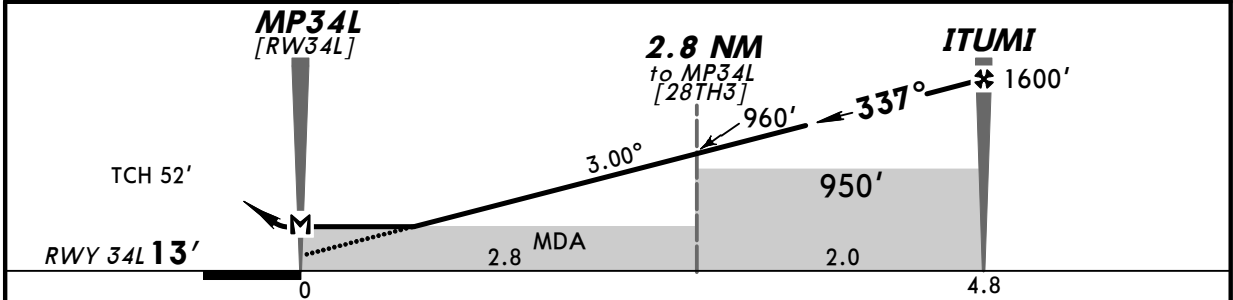
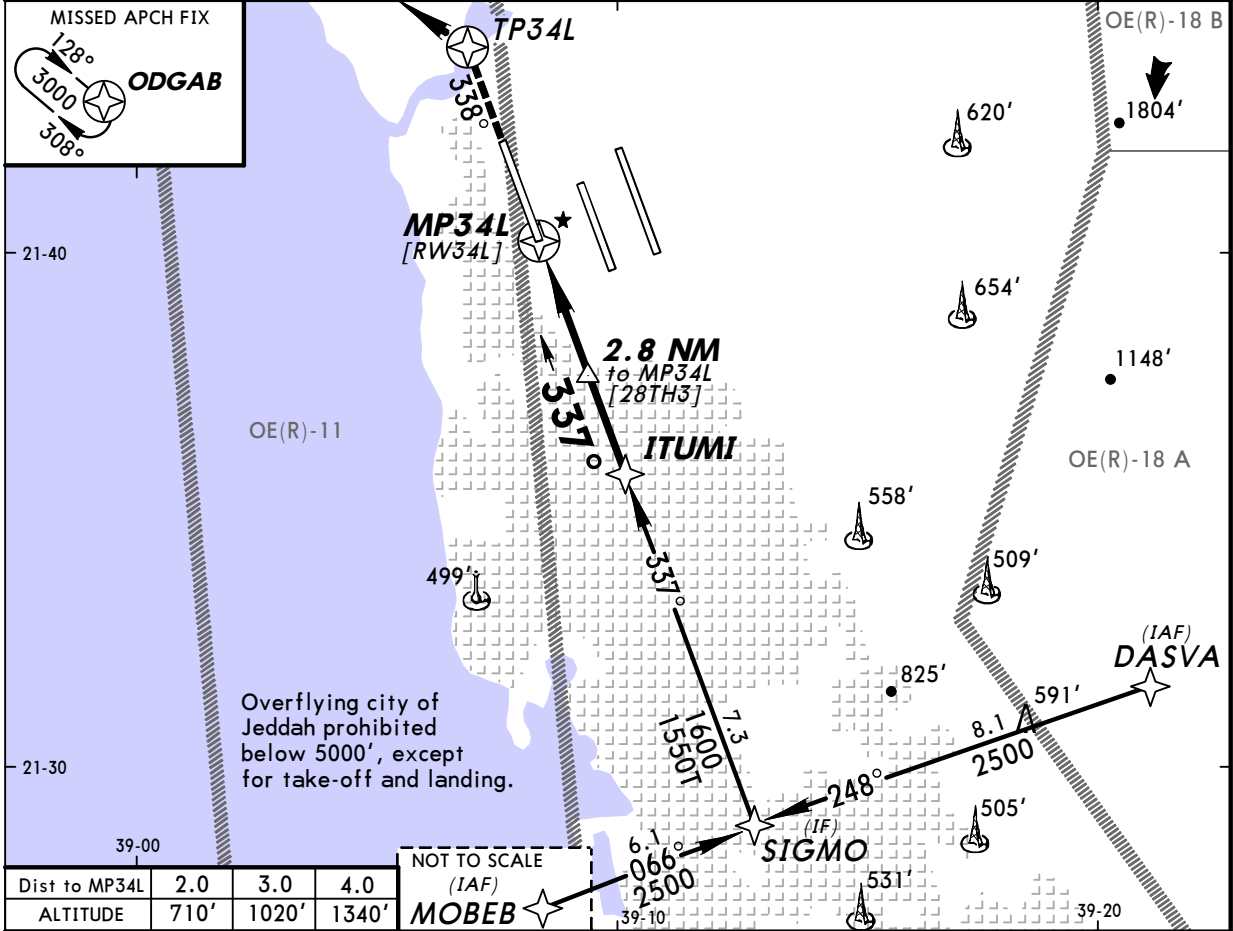
OEJN/JED
KING ABDULAZIZ INTL

2 JUL 10 (32)

JEDDAH, SAUDI ARABIA
RNAV (GNSS) Rwy 34L

BRIEFING STRIP

RNAV	Final Apch Crs 337°	Procedure Alt ITUMI 1600' (1587')	MDA(H) 420' (407')	Apt Elev 48' RWY 13'	3800'
MISSED APCH: Climb to TP34L, then climbing turn LEFT to 3000' direct to ODGAB and hold.					
Alt Set: hPa	Rwy Elev: 0 hPa	Trans level: FL 150	Trans alt: 13000'	MSA MP34L	



Gnd speed-Kts	70	90	100	120	140	160	ALSF-II	TP34L	3000'	ODGAB
Descent Angle	3.00°	372	478	531	637	743	849	REIL VASI	LT	
MAP at MP34L										

STRAIGHT-IN LANDING RWY 34L		CIRCLE-TO-LAND	
MDA(H) 420' (407')			
ALS out			

A	RVR 720m VIS 800m	RVR 1500m VIS 1600m	A	NOT AUTHORIZED
B			B	
C	1200m	RVR 1800m VIS 2000m	C	
D	RVR 1500m VIS 1600m		D	

TERPS

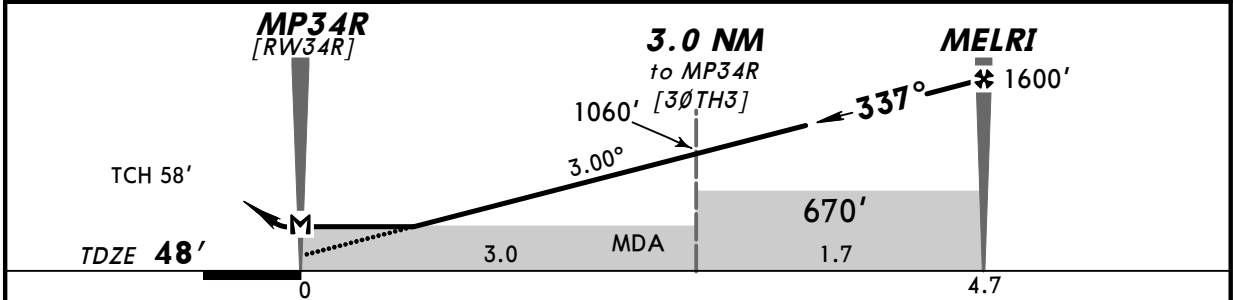
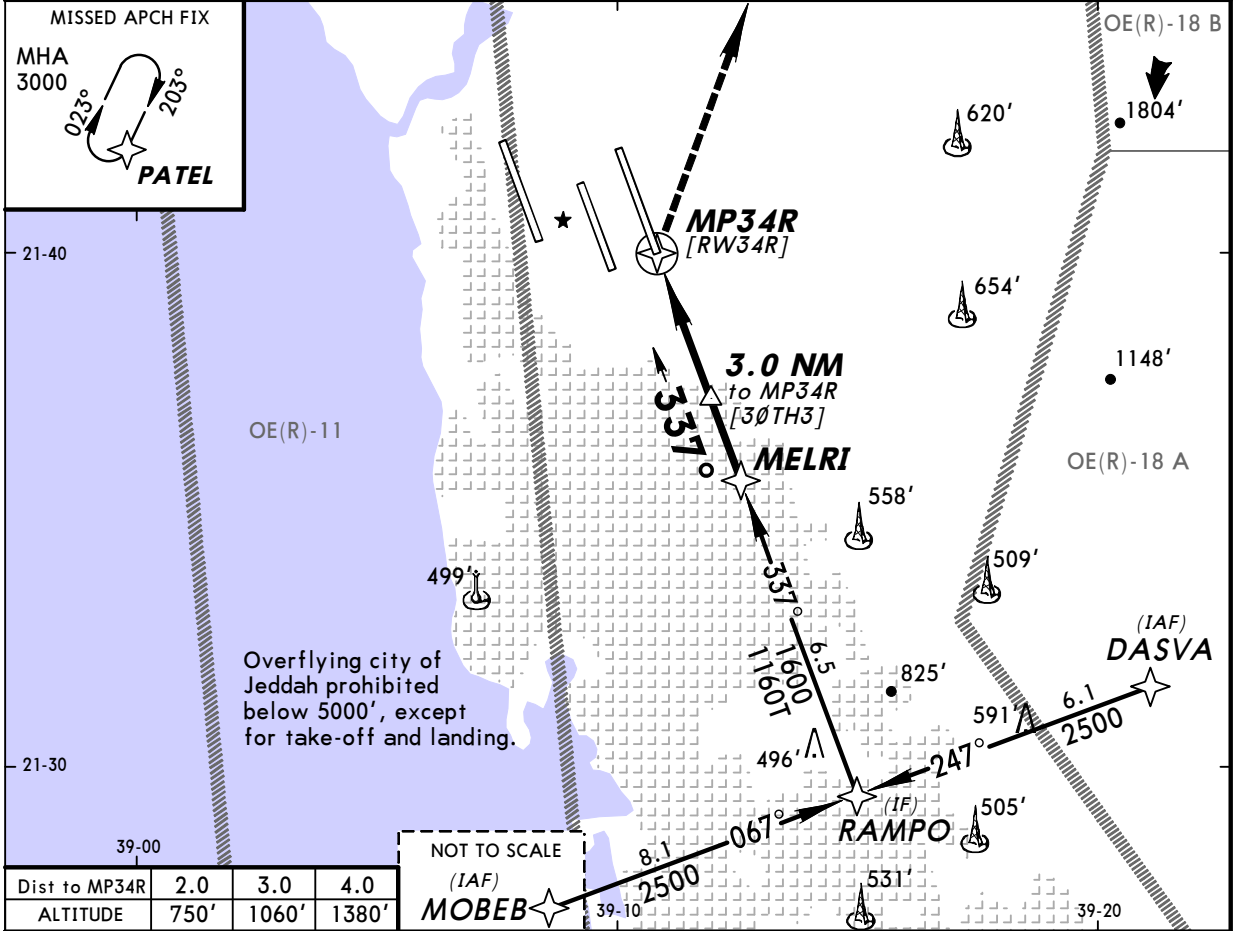
OEJN/JED
KING ABDULAZIZ INTL

2 JUL 10 (33)

JEDDAH, SAUDI ARABIA
RNAV (GNSS) Rwy 34R

BRIEFING STRIP

RNAV	Final Apch Crs 337°	Procedure Alt MELRI 1600' (1552')	MDA(H) 500' (452')	Apt Elev 48' TDZE 48'	3800'
MISSED APCH: Climbing turn RIGHT to 3000' direct to PATEL and hold.					
Alt Set: hPa		TDZ Elev: 2 hPa		Trans level: FL 150	
				Trans alt: 13000'	
					MSA MP34R



Gnd speed-Kts	70	90	100	120	140	160	HIALS REIL PAPI 3000' RT PATEL	
Descent Angle	3.00°	372	478	531	637	743		849
MAP at MP34R								

STRAIGHT-IN LANDING RWY 34R		CIRCLE-TO-LAND	
MDA(H) 500' (452')			
ALS out			
A	RVR 720m VIS 800m	RVR 1500m VIS 1600m	A
B			B
C	1200m	RVR 1800m VIS 2000m	C
D	RVR 1500m VIS 1600m	2400m	D
		NOT AUTHORIZED	

TERPS

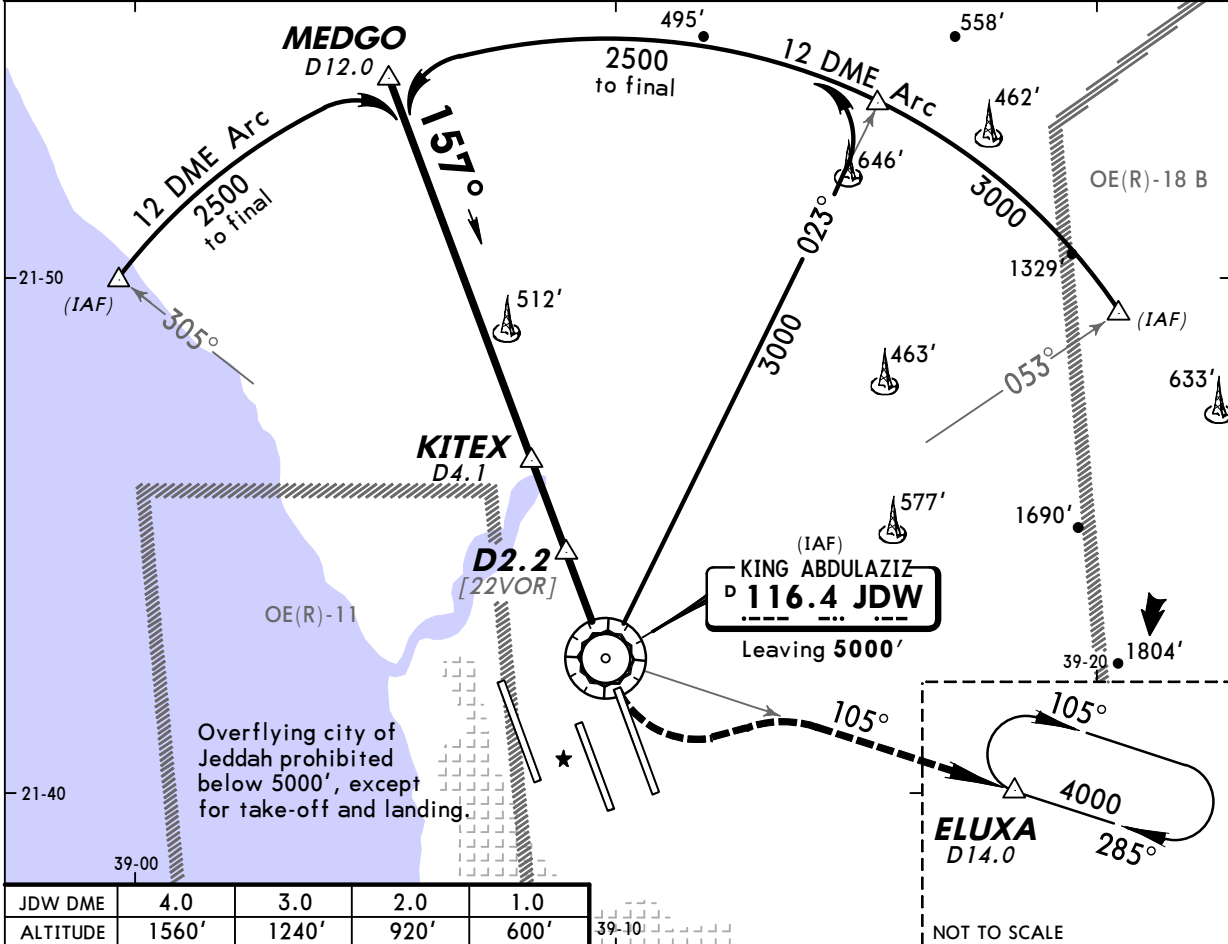
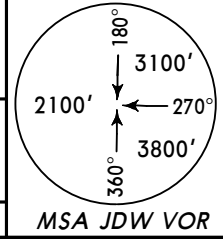
OEJN/JED
KING ABDULAZIZ INTL

23 APR 10 (34)

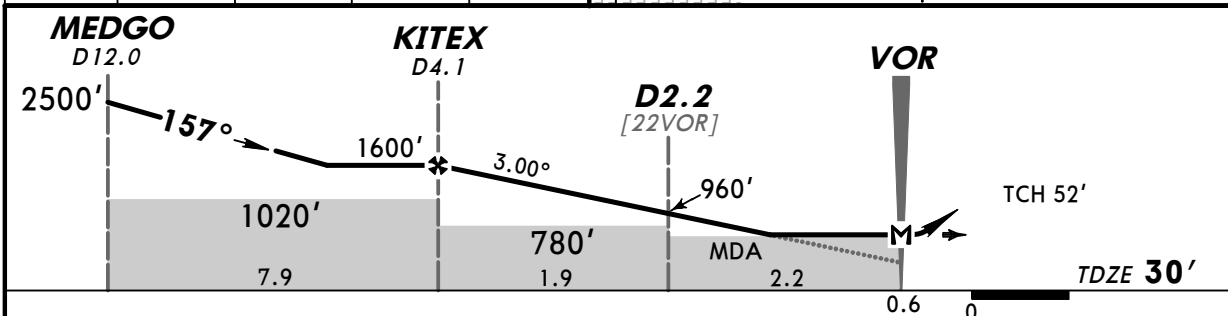
JEDDAH, SAUDI ARABIA
VOR DME Rwy 16L

BRIEFING STRIP

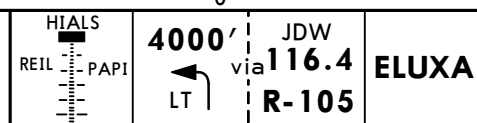
VOR JDW 116.4	Final Apch Crs 157°	Procedure Alt KITEX 1600' (1570')	MDA(H) 440' (410')	Apt Elev 48' TDZE 30'
MISSED APCH: Climbing turn LEFT to 4000' via R-105 to ELUXA and hold, or as directed.				
Alt Set: hPa	TDZ Elev: 1 hPa	Trans level: FL 150	Trans alt: 13000'	MSA JDW VOR



JDW DME	4.0	3.0	2.0	1.0
ALTITUDE	1560'	1240'	920'	600'



Gnd speed-Kts	70	90	100	120	140	160
Descent Angle 3.00°	372	478	531	637	743	849
MAP at VOR						



TERPS

STRAIGHT-IN LANDING RWY 16L		CIRCLE-TO-LAND	
MDA(H) 440' (410')			
ALS out			
A	RVR 720m VIS 800m	RVR 1500m VIS 1600m	A
B			B
C	1200m		C
D	RVR 1500m VIS 1600m	RVR 1800m VIS 2000m	D

NOT AUTHORIZED

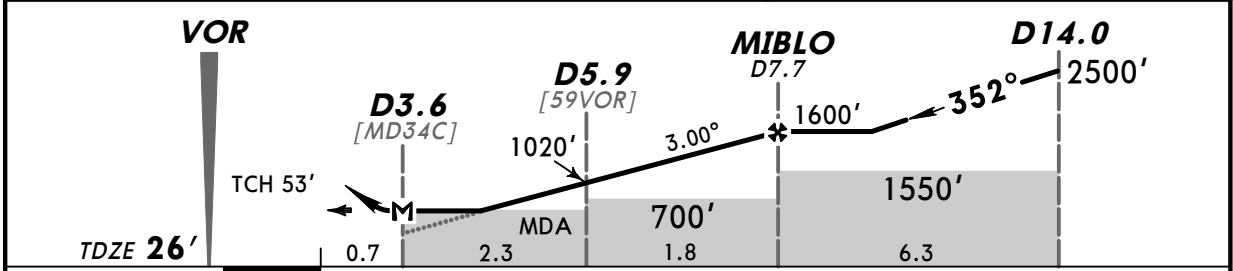
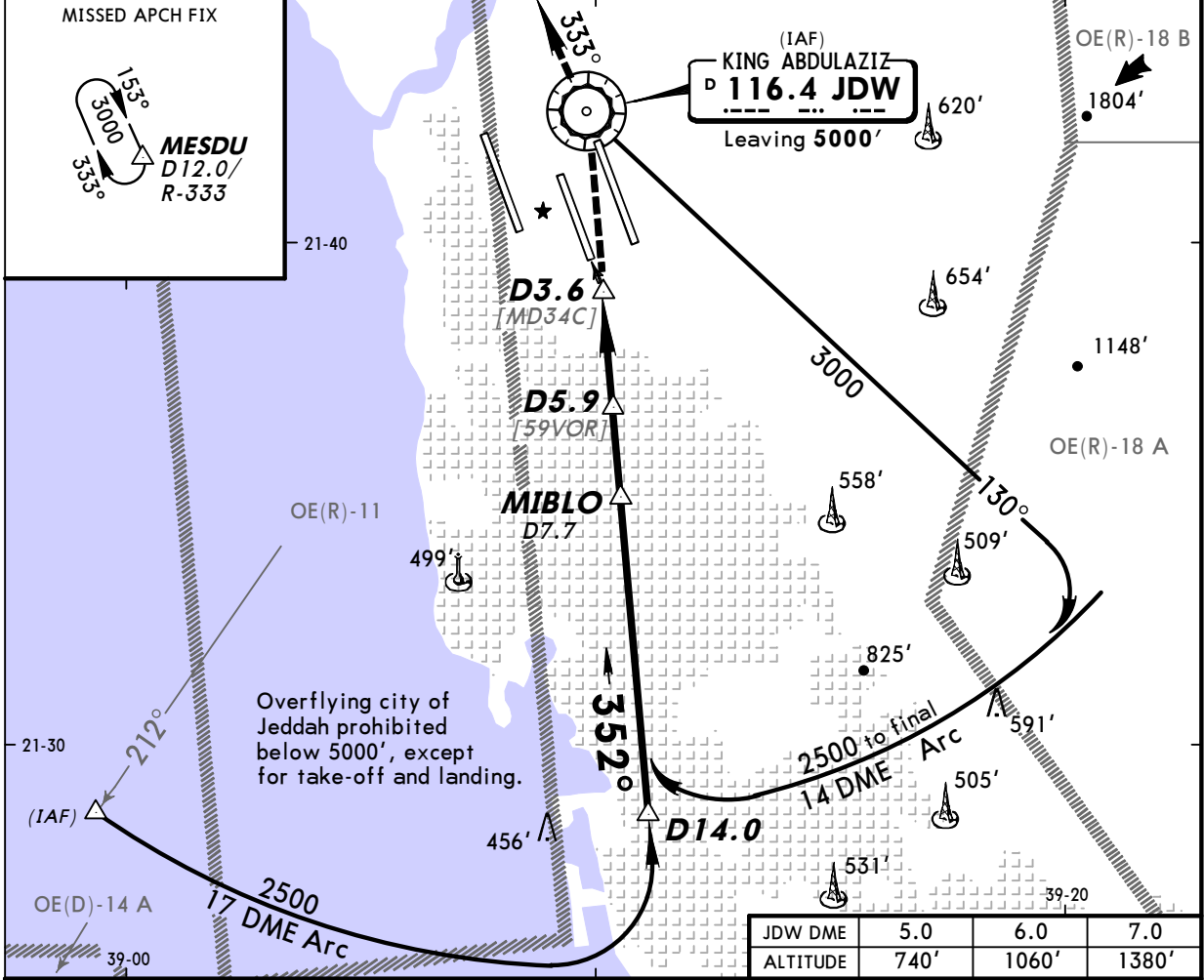
OEJN/JED
KING ABDULAZIZ INTL

23 APR 10 35

JEDDAH, SAUDI ARABIA
VOR DME Rwy 34C

BRIEFING STRIP

VOR JDW 116.4	Final Apch Crs 352°	Procedure Alt MIBLO 1600' (1574')	MDA(H) 420' (394')	Apt Elev 48' TDZE 26'	
MISSED APCH: Climb direct to VOR, then climbing turn LEFT via R-333 to 3000' to MESDU and hold, or as directed.					
Alt Set: hPa		TDZ Elev: 1 hPa	Trans level: FL 150	Trans alt: 13000'	MSA JDW VOR



Gnd speed-Kts	70	90	100	120	140	160	ALSF-II	JDW	3000'	JDW	MESDU
Descent Angle	3.00°	372	478	531	637	849	REIL VASI	116.4	via 116.4	R-333	
MAP at D3.6							VASI				

STRAIGHT-IN LANDING RWY 34C				CIRCLE-TO-LAND			
MDA(H) 420' (394')							
ALS out							
A							A
B	RVR 720m VIS 800m			RVR 1500m VIS 1600m			B
C							C
D	RVR 1500m VIS 1600m			RVR 1800m VIS 2000m			D
				NOT AUTHORIZED			

TERPS

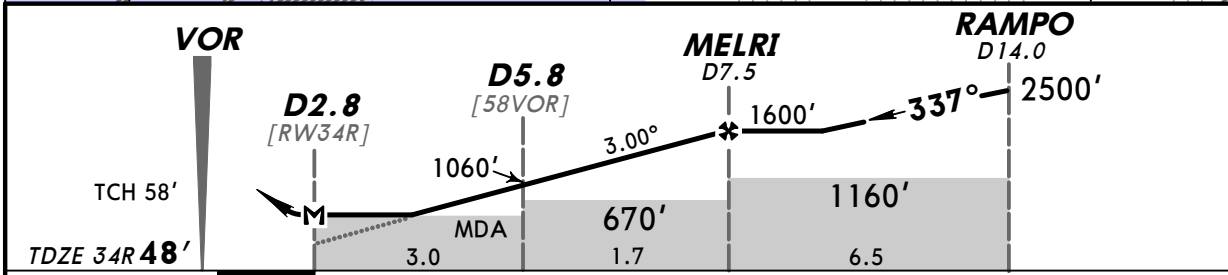
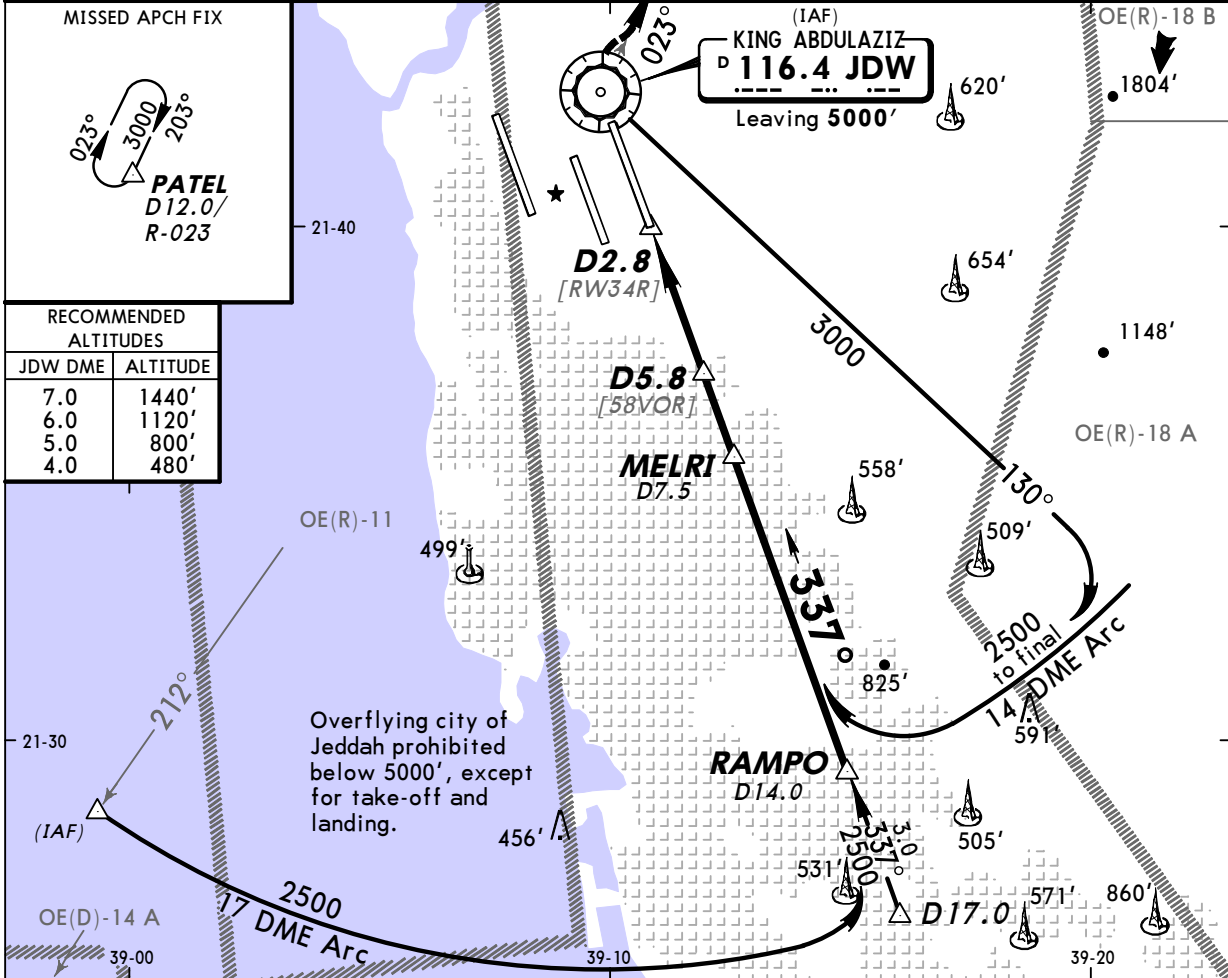
OEJN/JED
KING ABDULAZIZ INTL

23 APR 10 36

JEDDAH, SAUDI ARABIA
VOR DME Rwy 34R

BRIEFING STRIP

VOR JDW 116.4	Final Apch Crs 337°	Procedure Alt MELRI 1600' (1552')	MDA(H) 500' (452')	Apt Elev 48' TDZE 48'	
MISSED APCH: Climbing turn RIGHT via R-023 to 3000' direct to PATEL and hold.					
Alt Set: hPa		TDZ Elev: 2 hPa	Trans level: FL 150	Trans alt: 13000'	MSA JDW VOR



Gnd speed-Kts	70	90	100	120	140	160	HIALS REIL PAPI 3000' JDW via 116.4 RT R-023 PATEL
Descent Angle 3.00°	372	478	531	637	743	849	
MAP at D2.8							

STRAIGHT-IN LANDING RWY 34R		CIRCLE-TO-LAND	
MDA(H) 500' (452')			
	ALS out		
A	RVR 720m VIS 800m	RVR 1500m VIS 1600m	A
B			B
C	1200m	RVR 1800m VIS 2000m	C
D	RVR 1500m VIS 1600m	2400m	D
		NOT AUTHORIZED	

TERPS